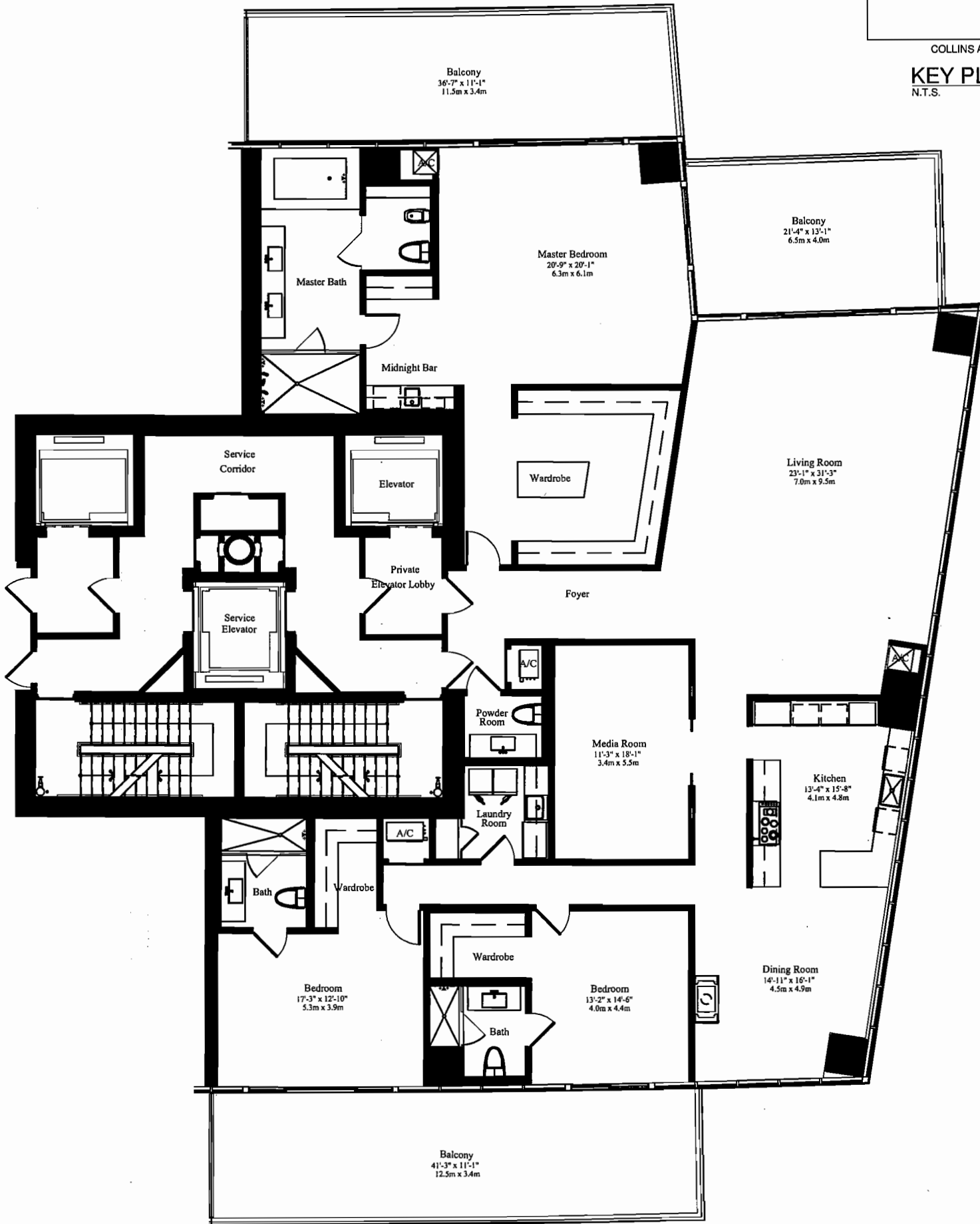
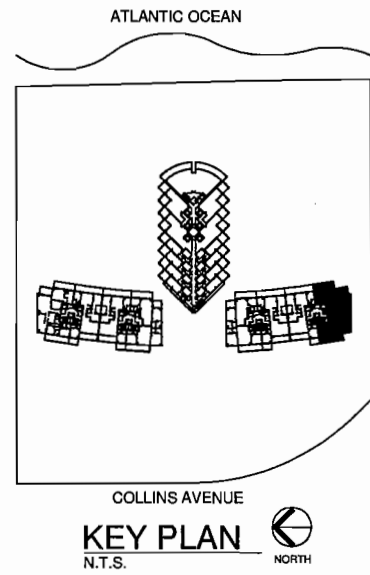


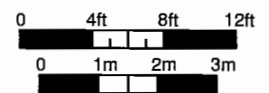


ST. REGIS
Hotels & Resorts



**SOUTH TOWER
UNIT 'A'**
3 BEDROOMS, MEDIA ROOM AND 3 1/2 BATHS

A/C	3,884 SQ FT	360.8 M ²
BALCONY	1,132 SQ FT	105.2 M ²
TOTAL	5,016 SQ FT	466.0 M²



The Sieger Suarez Architectural Partnership

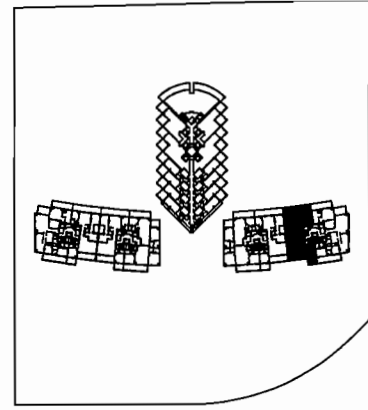
5996 Southwest 70th Street, South Miami, Florida, 33143. 305/274-2702.
Charles H. Sieger, AIA, FASA Greg J. Suarez, AIA

Stated dimensions are measured to the exterior boundaries of the exterior walls, the centerline of interior demising walls between units, and the outer boundary of interior demising walls adjacent to common elements, and in fact vary from the dimensions that would be determined by using the description and definition of the "Unit" set forth in the Declaration (which generally only includes the interior airspace between the perimeter walls and excludes interior structural components). All dimensions are approximate, and all floor plans and development plans are subject to change.



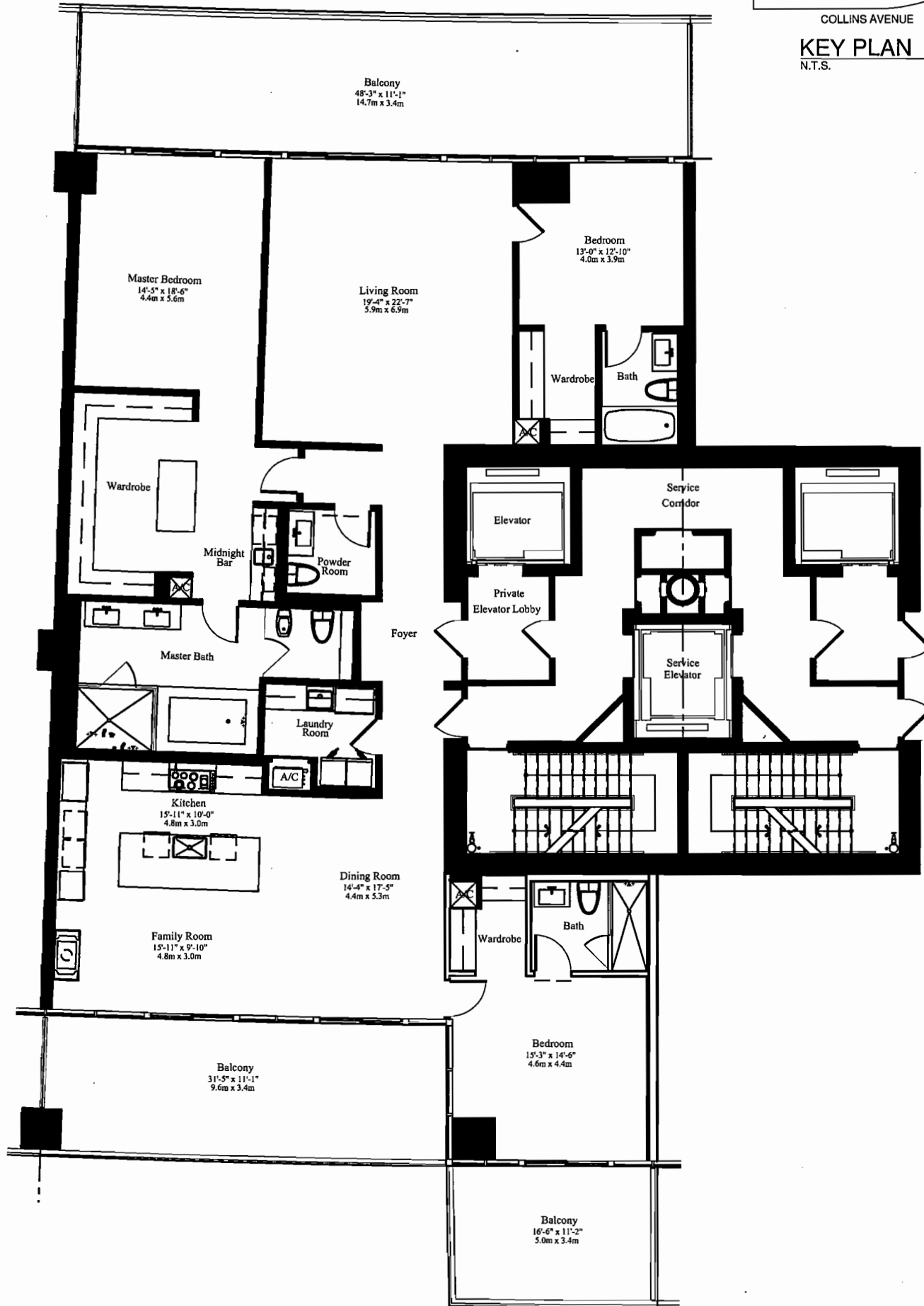
ST. REGIS
Hotels & Resorts

ATLANTIC OCEAN



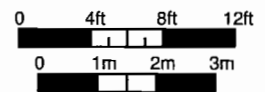
COLLINS AVENUE

KEY PLAN
N.T.S.



SOUTH TOWER (Levels 04-11)
UNIT 'B' MOD
3 BEDROOMS AND 3 1/2 BATHS

A/C	3,070 SQ FT	285.2 M ²
BALCONY	1,071 SQ FT	99.5 M ²
TOTAL	4,141 SQ FT	384.7 M²



The Sieger Suarez Architectural Partnership

5996 Southwest 70th Street, South Miami, Florida, 33143, 305/274-2702.

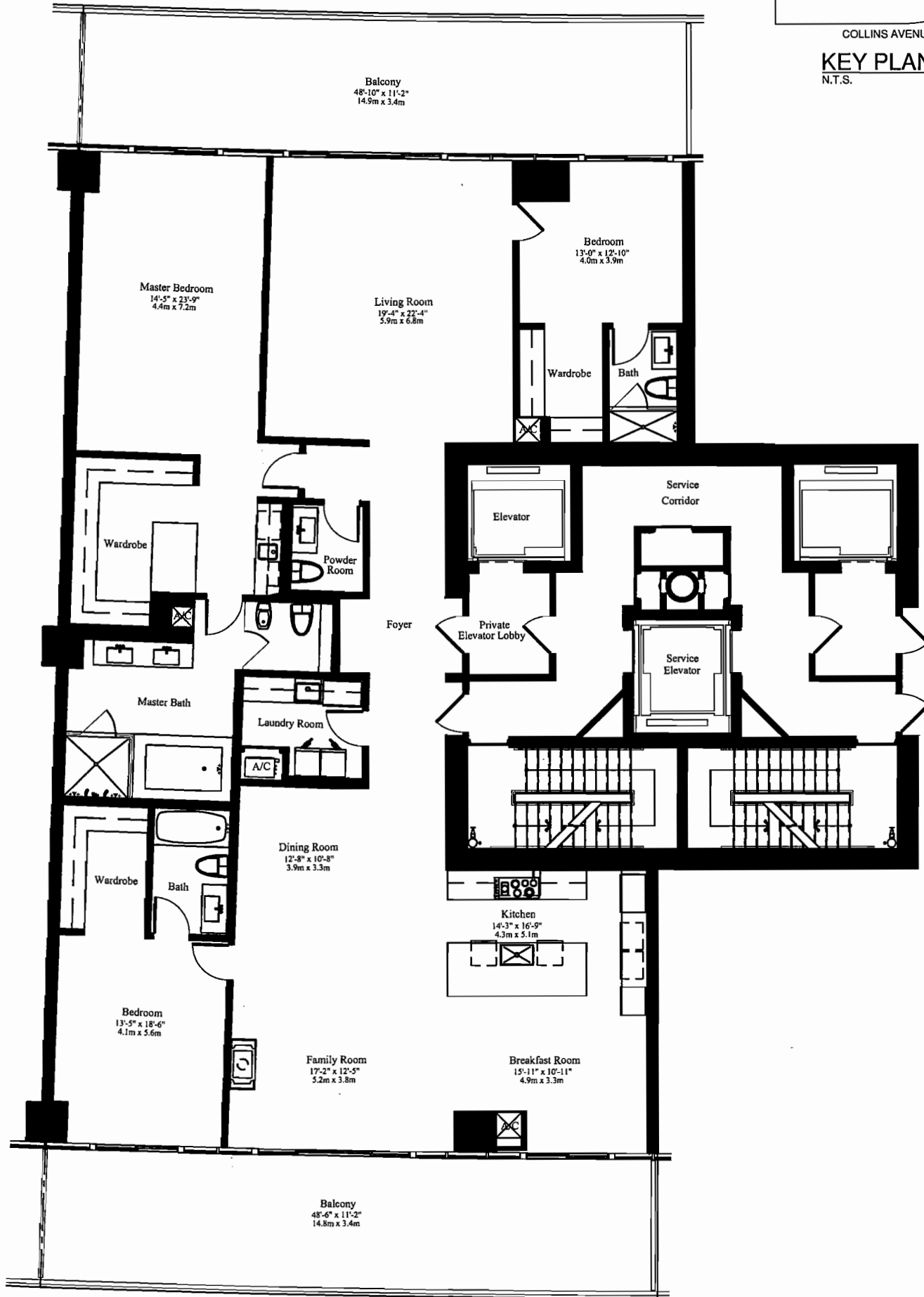
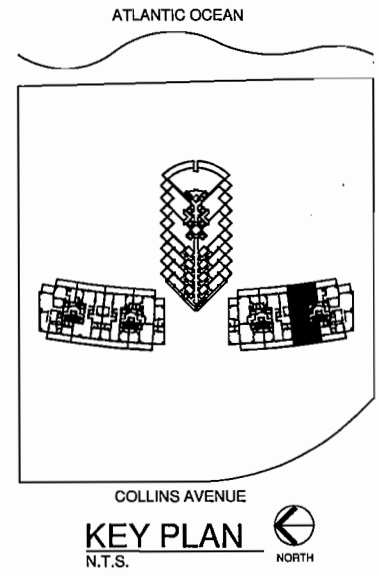
Charles H. Sieger, F.A.S.A.
D.C., AIA

John A. Suarez, A.A.A.
D.C., AIA

Stated dimensions are measured to the exterior boundaries of the exterior walls, the centerline of interior demising walls between units, and the outer boundary of interior demising walls adjacent to common elements, and in fact vary from the dimensions that would be determined by using the description and definition of the "Unit" set forth in the Declaration (which generally only includes the interior airspace between the perimeter walls and excludes interior structural components). All dimensions are approximate, and all floor plans and development plans are subject to change.

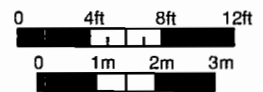


ST. REGIS
Hotels & Resorts



SOUTH TOWER (Levels 12-26)
UNIT 'B'
3 BEDROOMS AND 3 1/2 BATHS

A/C	3,459 SQ FT	321.4 M ²
BALCONY	1,071 SQ FT	99.5 M ²
TOTAL	4,530 SQ FT	420.9 M²



The Sieger Suarez Architectural Partnership

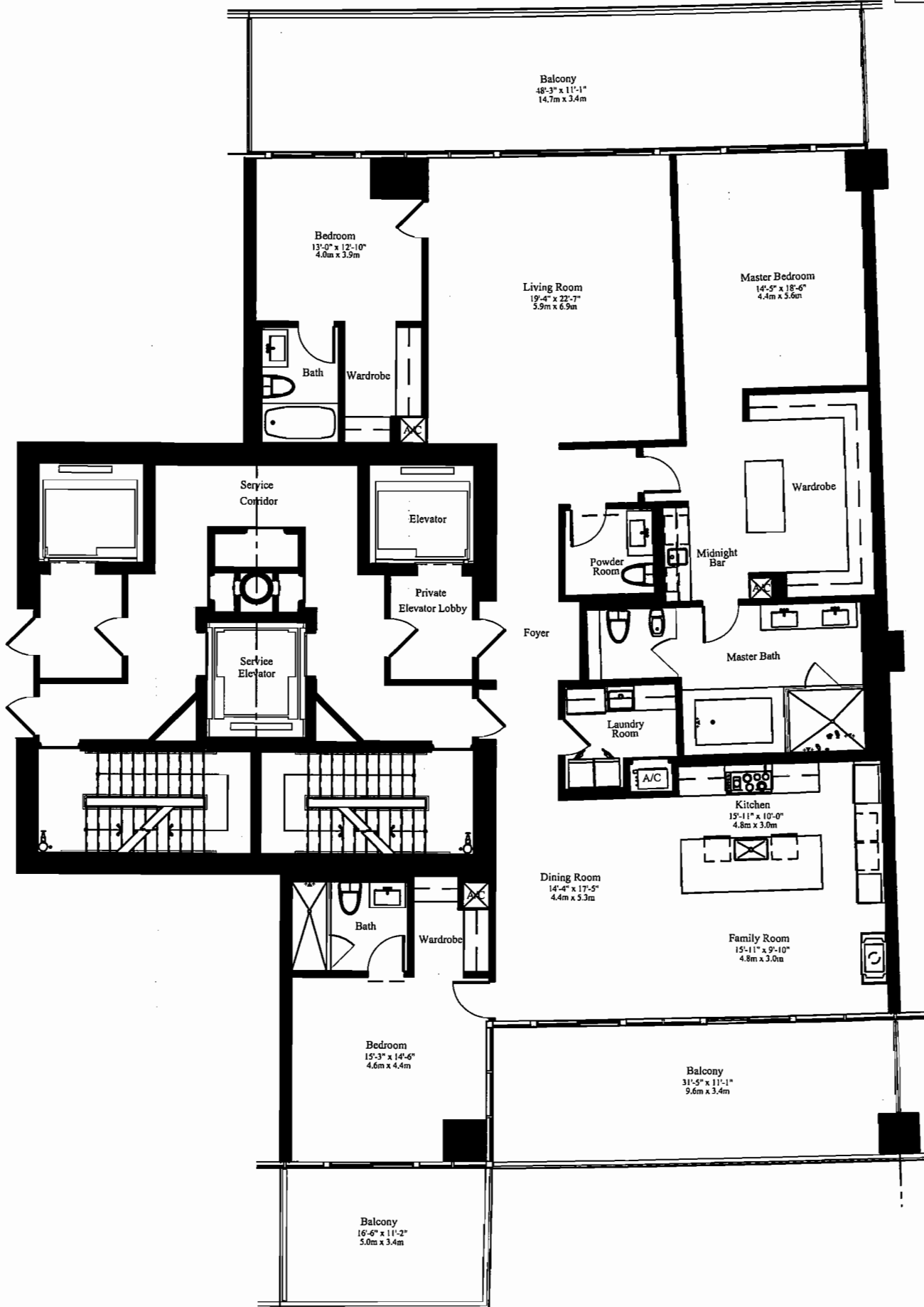
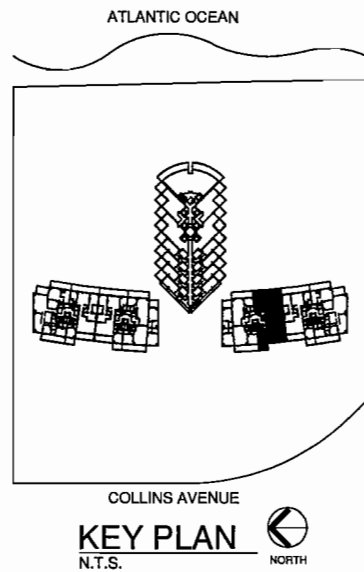
5996 Southwest 70th Street, South Miami, Florida, 33143. 305/274-2702.

Charles H. Sieger, F.A.S.A. *CS* 1982
John A. Suarez, A.S.A. *CS* 1988

Stated dimensions are measured to the exterior boundaries of the exterior walls, the centerline of interior demising walls between units, and the outer boundary of interior demising walls adjacent to common elements, and in fact vary from the dimensions that would be determined by using the description and definition of the "Unit" set forth in the Declaration (which generally only includes the interior airspace between the perimeter walls and excludes interior structural components). All dimensions are approximate, and all floor plans and development plans are subject to change.

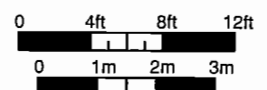


ST. REGIS
Hotels & Resorts



SOUTH TOWER (Levels 04-11)
UNIT 'C' MOD
3 BEDROOMS AND 3 1/2 BATHS

A/C	3,070 SQ FT	285.2 M ²
BALCONY	1,071 SQ FT	99.5 M ²
TOTAL	4,141 SQ FT	384.7 M²



The Sieger Suarez Architectural Partnership

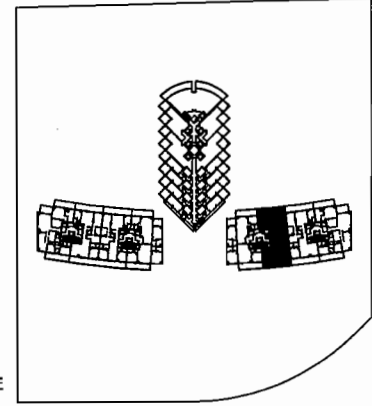
3996 Southwest 70th Street, South Miami, Florida, 33143, 305/274-2702.
Charles E. Sieger, F.A.I.A. U.S. / AIA 165748
 Jose A. Suarez, A.I.A. U.S. / AIA 161165

Stated dimensions are measured to the exterior boundaries of the exterior walls, the centerline of interior demising walls between units, and the outer boundary of interior demising walls adjacent to common elements, and in fact vary from the dimensions that would be determined by using the description and definition of the "Unit" set forth in the Declaration (which generally only includes the interior airspace between the perimeter walls and excludes interior structural components). All dimensions are approximate, and all floor plans and development plans are subject to change.

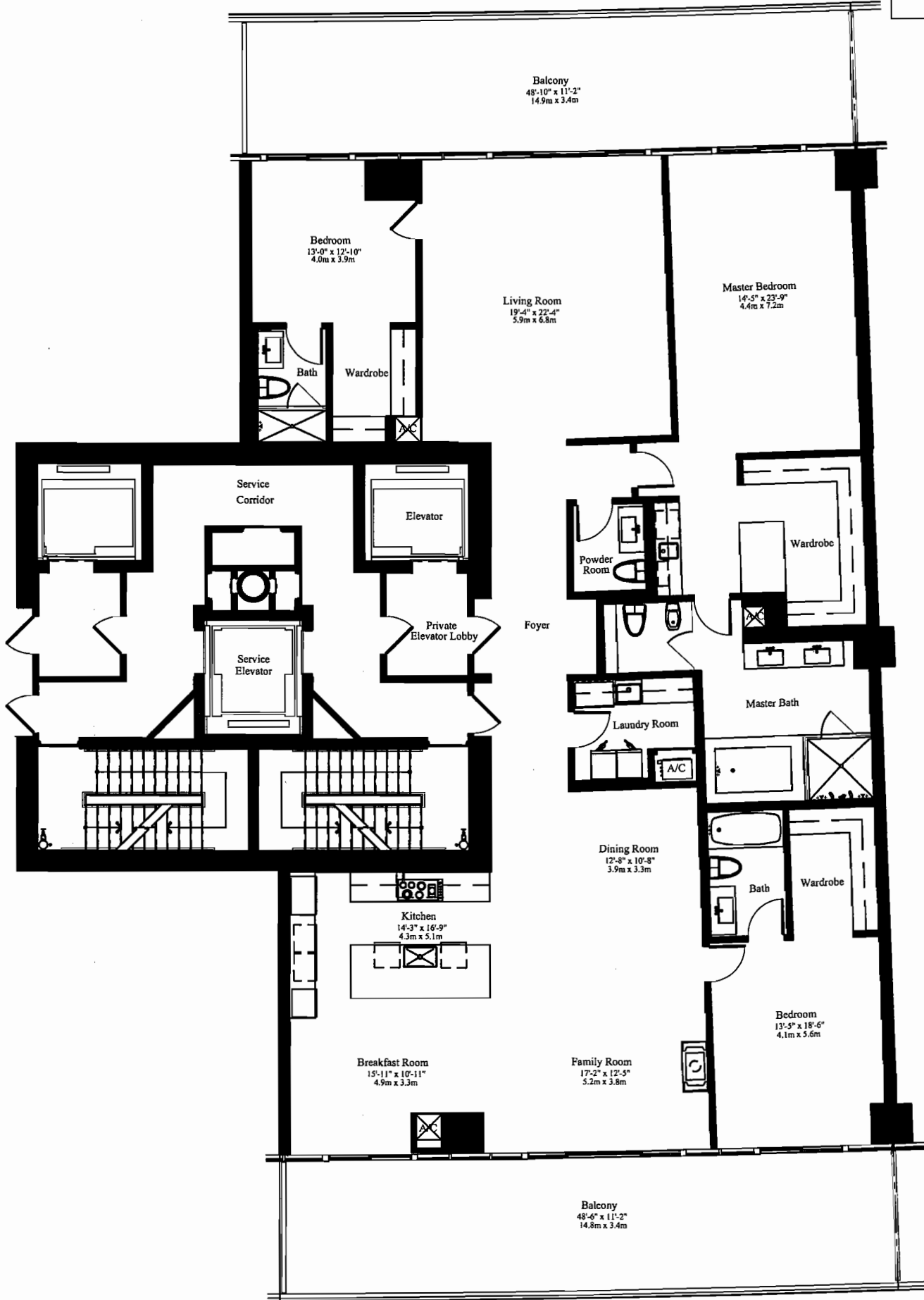


ST. REGIS
Hotels & Resorts

ATLANTIC OCEAN

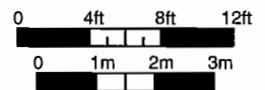


COLLINS AVENUE
KEY PLAN
N.T.S. NORTH



SOUTH TOWER (Levels 12-26)
UNIT 'C'
3 BEDROOMS AND 3 1/2 BATHS

A/C	3,459 SQ FT	321.4 M ²
BALCONY	1,071 SQ FT	99.5 M ²
TOTAL	4,530 SQ FT	420.9 M²



The Sieger Suarez Architectural Partnership

3996 Southwest 70th Street, South Miami, Florida, 33143. 305/274-2702.

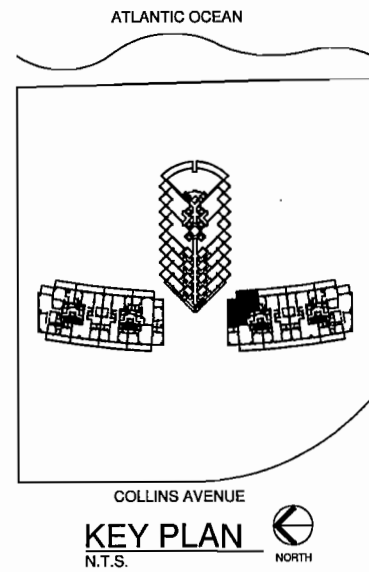
Charles H. Sieger, F.A.I.A.
L.P. # 281762

John J. Suarez, A.I.A.
L.P. # 281762

Stated dimensions are measured to the exterior boundaries of the exterior walls, the centerline of interior demising walls between units, and the outer boundary of interior demising walls adjacent to common elements, and in fact vary from the dimensions that would be determined by using the description and definition of the "Unit" set forth in the Declaration (which generally only includes the interior airspace between the perimeter walls and excludes interior structural components). All dimensions are approximate, and all floor plans and development plans are subject to change.

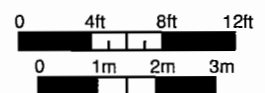


ST. REGIS
Hotels & Resorts



**SOUTH TOWER
UNIT 'D'
2 BEDROOMS AND 2 1/2 BATHS**

A/C	1,911 SQ FT	177.5 M ²
BALCONY	594 SQ FT	55.2 M ²
TOTAL	2,505 SQ FT	232.7 M²



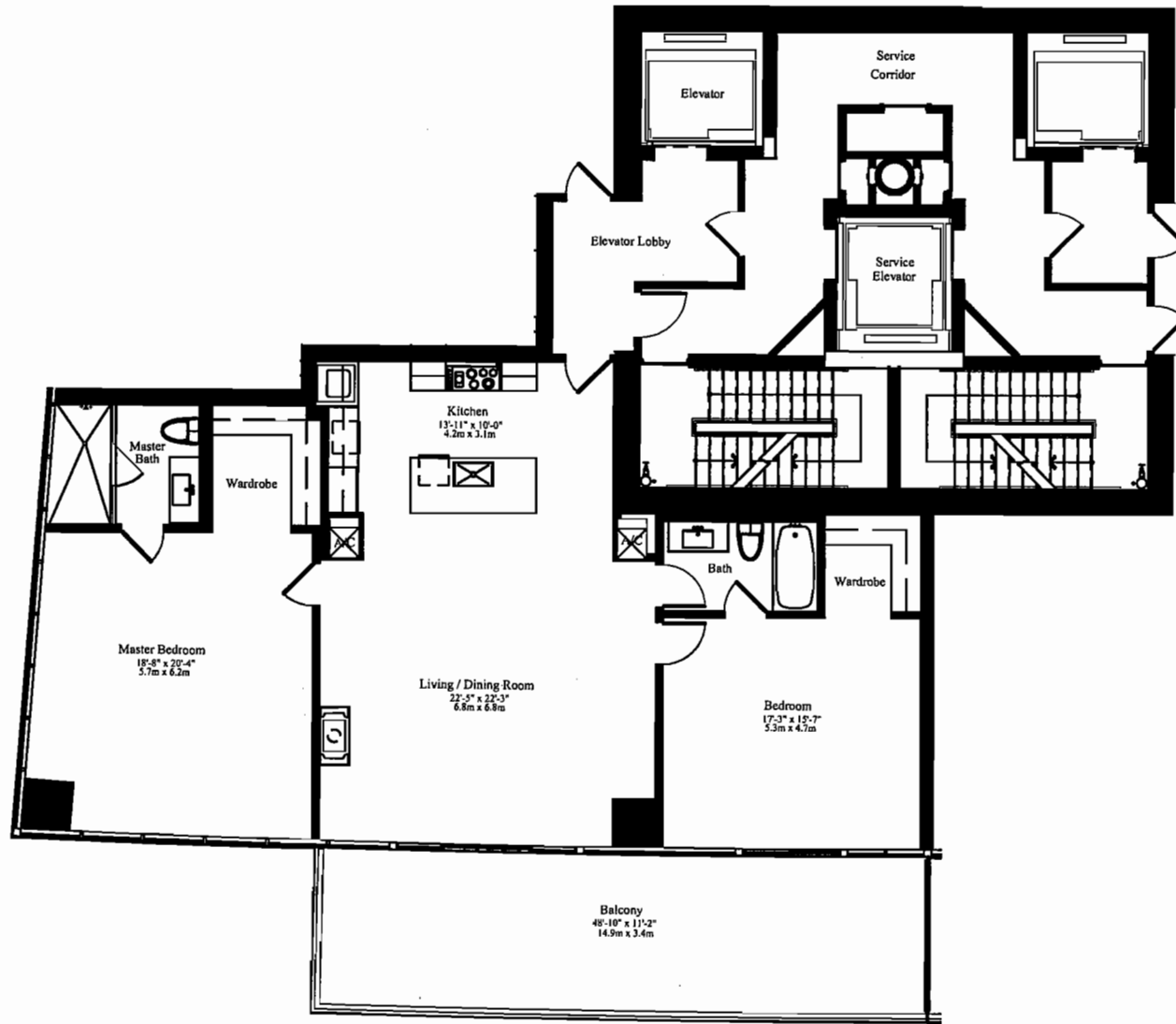
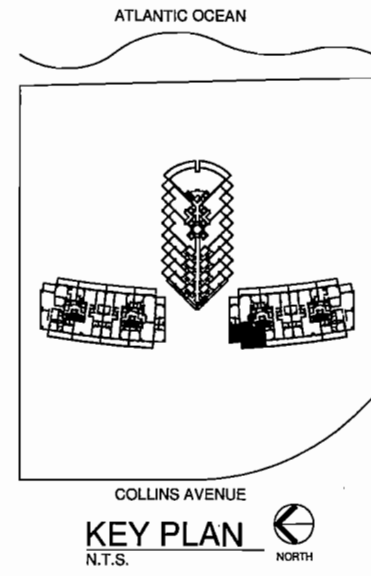
The Sieger Suarez Architectural Partnership

5996 Southwest 70th Street, South Miami, Florida, 33143, 305/274-2702.
Charles H. Sieger, F.A.I.A. James A. Suarez, A.I.A.

Stated dimensions are measured to the exterior boundaries of the exterior walls, the centerline of interior demising walls between units, and the outer boundary of interior demising walls adjacent to common elements, and in fact vary from the dimensions that would be determined by using the description and definition of the "Unit" set forth in the Declaration (which generally only includes the interior airspace between the perimeter walls and excludes interior structural components). All dimensions are approximate, and all floor plans and development plans are subject to change.

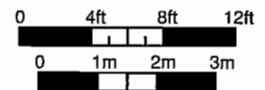


ST. REGIS
Hotels & Resorts



**SOUTH TOWER
UNIT 'E'
2 BEDROOMS AND 2 BATHS**

A/C	1,777 SQ FT	165.1 M ²
BALCONY	455 SQ FT	42.3 M ²
TOTAL	2,232 SQ FT	207.4 M²



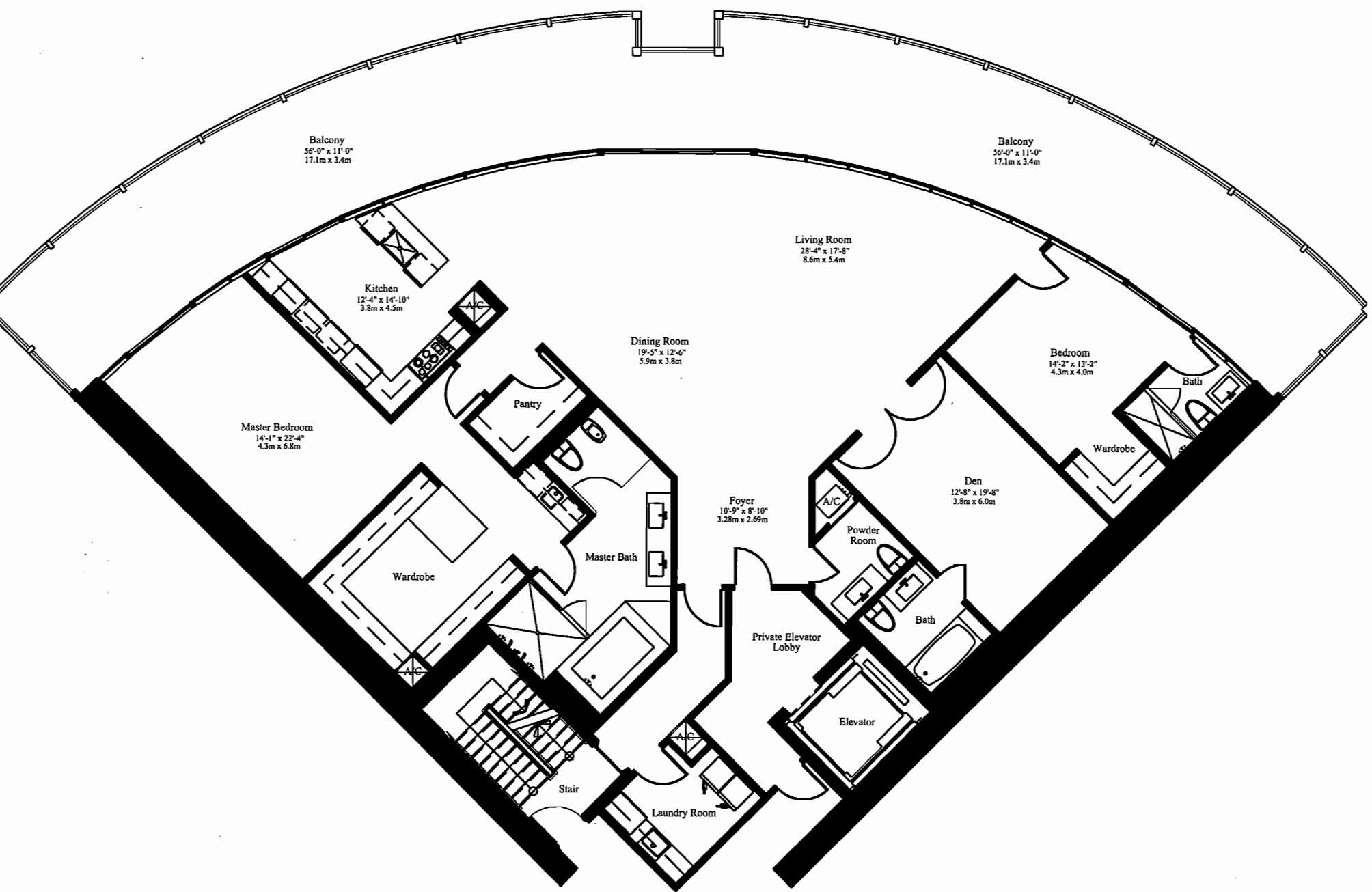
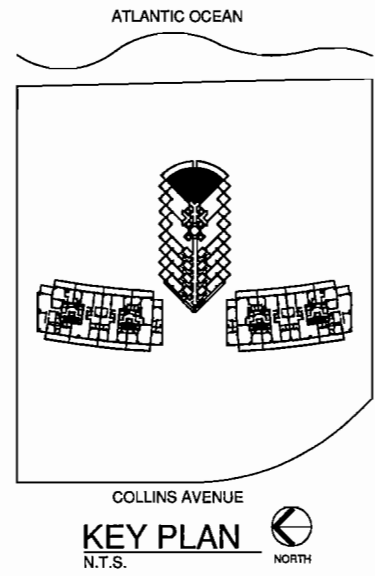
The Sieger Suarez Architectural Partnership

3906 Southwest 70th Street, South Miami, Florida, 33143, 305/274-2702.
Charles H. Sieger, F.A.I.A. U.C. # 465482 Jose J. Suarez, A.I.A. U.C. # 461483

Stated dimensions are measured to the exterior boundaries of the exterior walls, the centerline of interior demising walls between units, and the outer boundary of interior demising walls adjacent to common elements, and in fact vary from the dimensions that would be determined by using the description and definition of the "Unit" set forth in the Declaration (which generally only includes the interior airspace between the perimeter walls and excludes interior structural components). All dimensions are approximate, and all floor plans and development plans are subject to change.

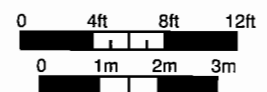


ST. REGIS
Hotels & Resorts



**HOTEL TOWER
UNIT 'A'
2 BEDROOMS, DEN AND 3 & 1/2 BATHS**

A/C	3,281 SQ FT	304.8 M ²
BALCONY	1,283 SQ FT	119.2 M ²
TOTAL	4,564 SQ FT	424.0 M²



The Sieger Suarez Architectural Partnership

5996 Southwest 70th Street, South Miami, Florida, 33143. 305/274-2702.

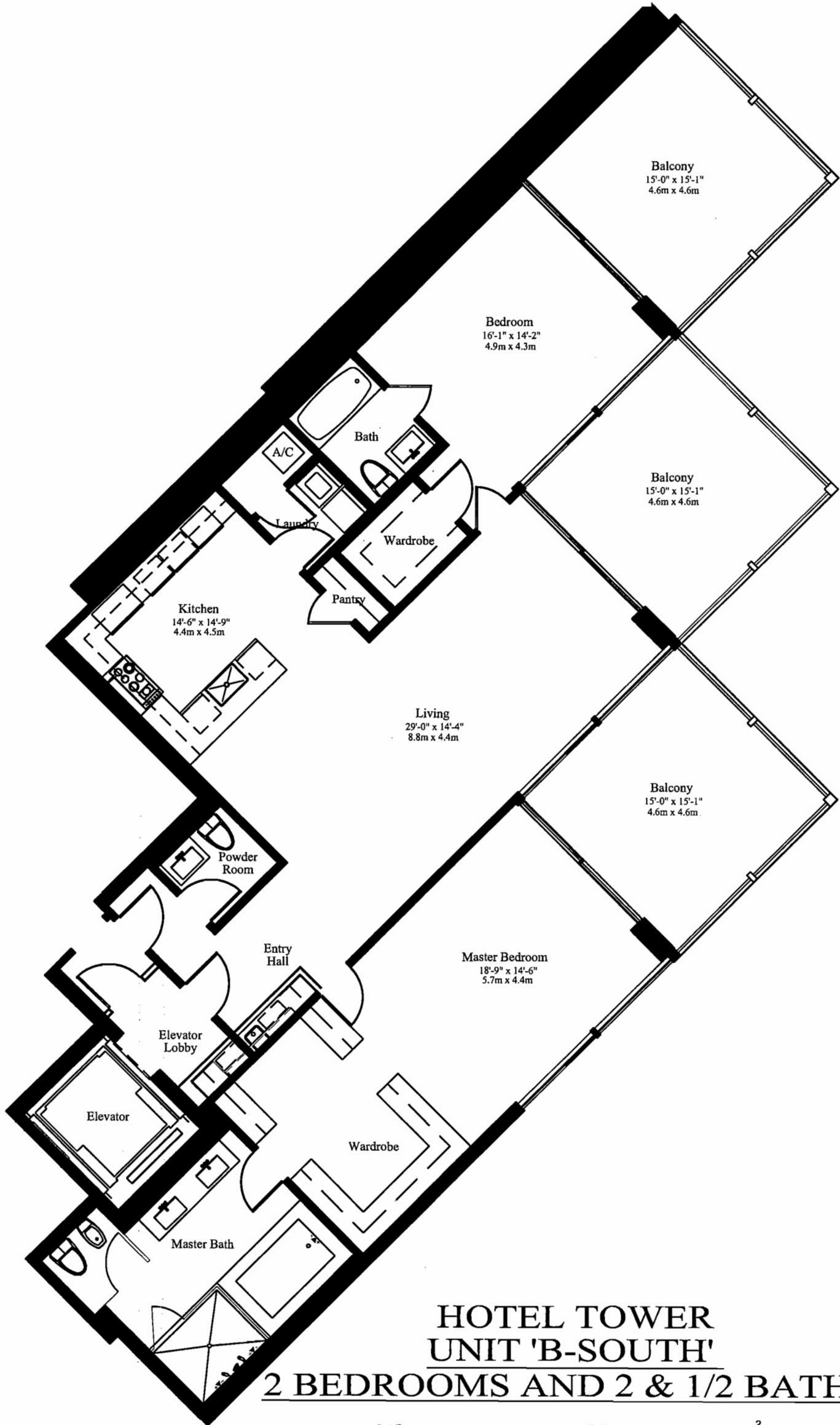
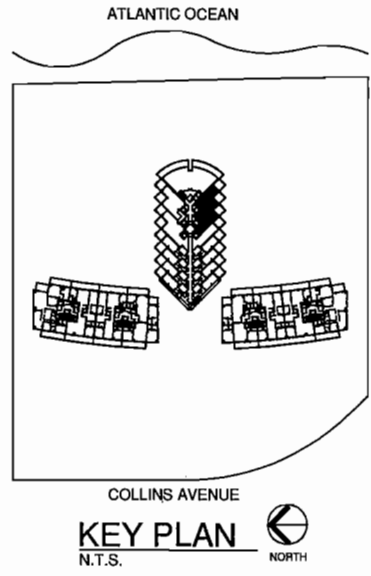
Charles M. Sieger, F.A.I.A.
Lic. # AC5782

Jose J. Suarez, A.I.A.
Lic. # AR11005

Stated dimensions are measured to the exterior boundaries of the exterior walls, the centerline of interior demising walls between units, and the outer boundary of interior demising walls adjacent to common elements, and in fact vary from the dimensions that would be determined by using the description and definition of the "Unit" set forth in the Declaration (which generally only includes the interior airspace between the perimeter walls and excludes interior structural components). All dimensions are approximate, and all floor plans and development plans are subject to change.

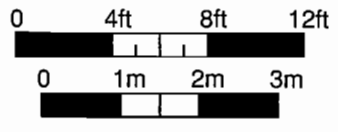


ST. REGIS
Hotels & Resorts



HOTEL TOWER
UNIT 'B-SOUTH'
2 BEDROOMS AND 2 & 1/2 BATHS

A/C	2,128 SQ FT	197.7 M ²
BALCONY	683 SQ FT	63.5 M ²
TOTAL	2,811 SQ FT	261.2 M²



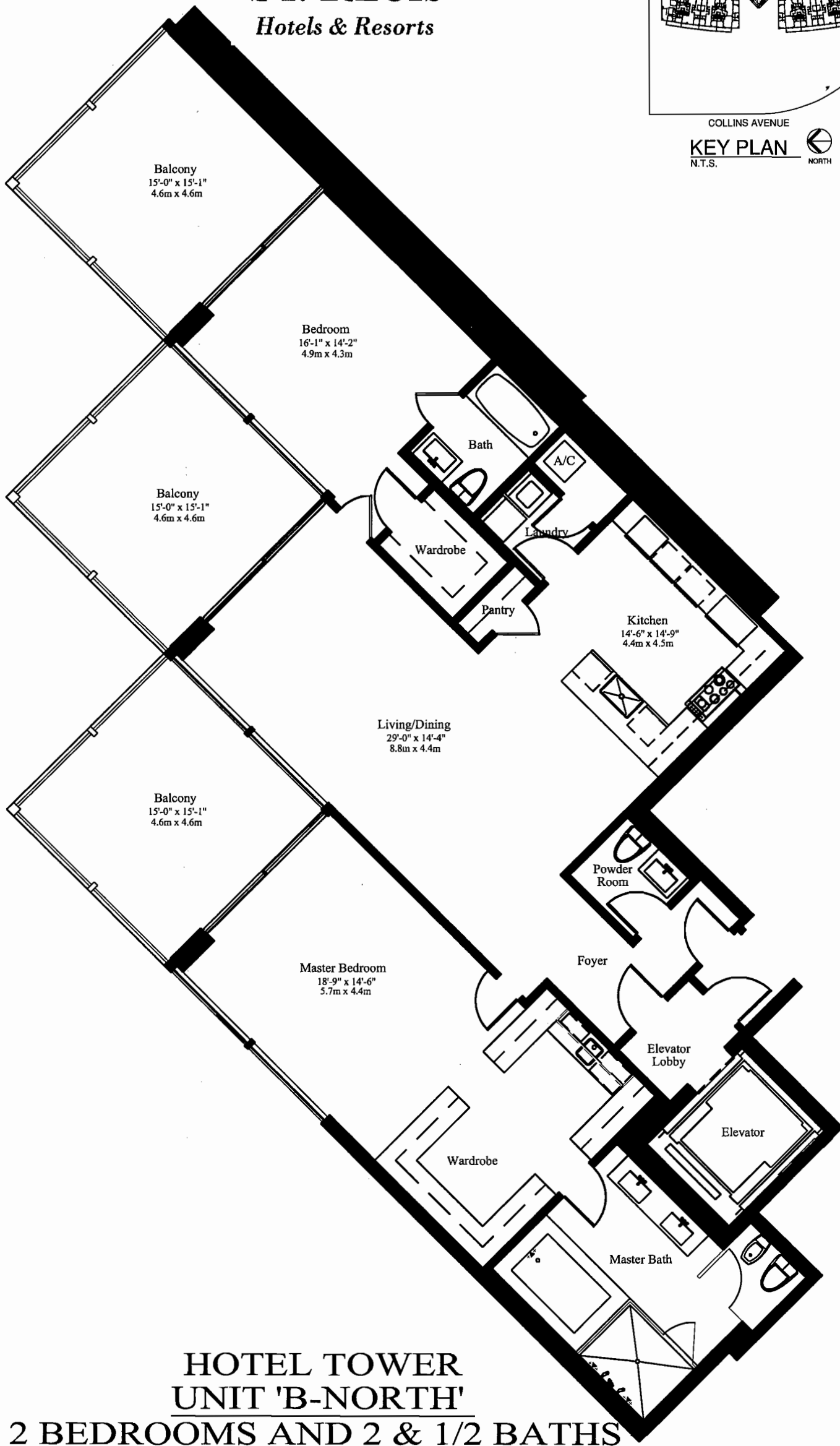
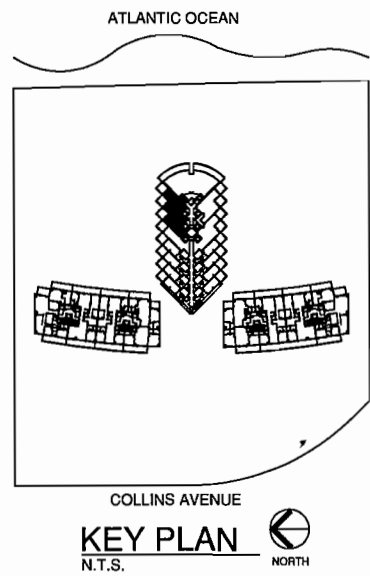
The Sieger Suarez Architectural Partnership

5996 Southwest 70th Street, South Miami, Florida, 33143. 305/274-2702.
Charles H. Sieger, F.A.S.A. Carlos A. Suarez, A.A.A.

Stated dimensions are measured to the exterior boundaries of the exterior walls, the centerline of interior demising walls between units, and the outer boundary of interior demising walls adjacent to common elements, and in fact vary from the dimensions that would be determined by using the description and definition of the "Unit" set forth in the Declaration (which generally only includes the interior airspace between the perimeter walls and excludes interior structural components). All dimensions are approximate, and all floor plans and development plans are subject to change.

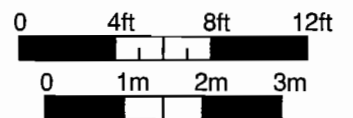


ST. REGIS
Hotels & Resorts



**HOTEL TOWER
UNIT 'B-NORTH'
2 BEDROOMS AND 2 & 1/2 BATHS**

A/C	2,128 SQ FT	197.7 M ²
BALCONY	683 SQ FT	63.5 M ²
TOTAL	2,811 SQ FT	261.2 M²



The Sieger Suarez Architectural Partnership

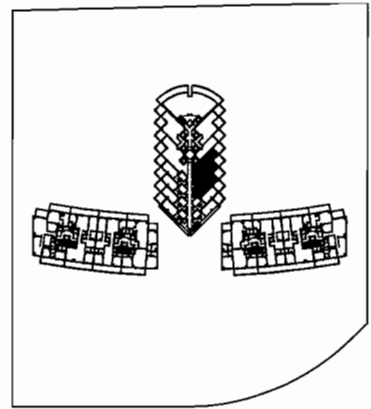
5806 Southeast 70th Street, South Miami, Florida, 33143, 305/274-2702.
Charles H. Sieger, F.A.A.I. Diego J. Suarez, A.A.A.

Stated dimensions are measured to the exterior boundaries of the exterior walls, the centerline of interior demising walls between units, and the outer boundary of interior demising walls adjacent to common elements, and in fact vary from the dimensions that would be determined by using the description and definition of the "Unit" set forth in the Declaration (which generally only includes the interior airspace between the perimeter walls and excludes interior structural components). All dimensions are approximate, and all floor plans and development plans are subject to change.



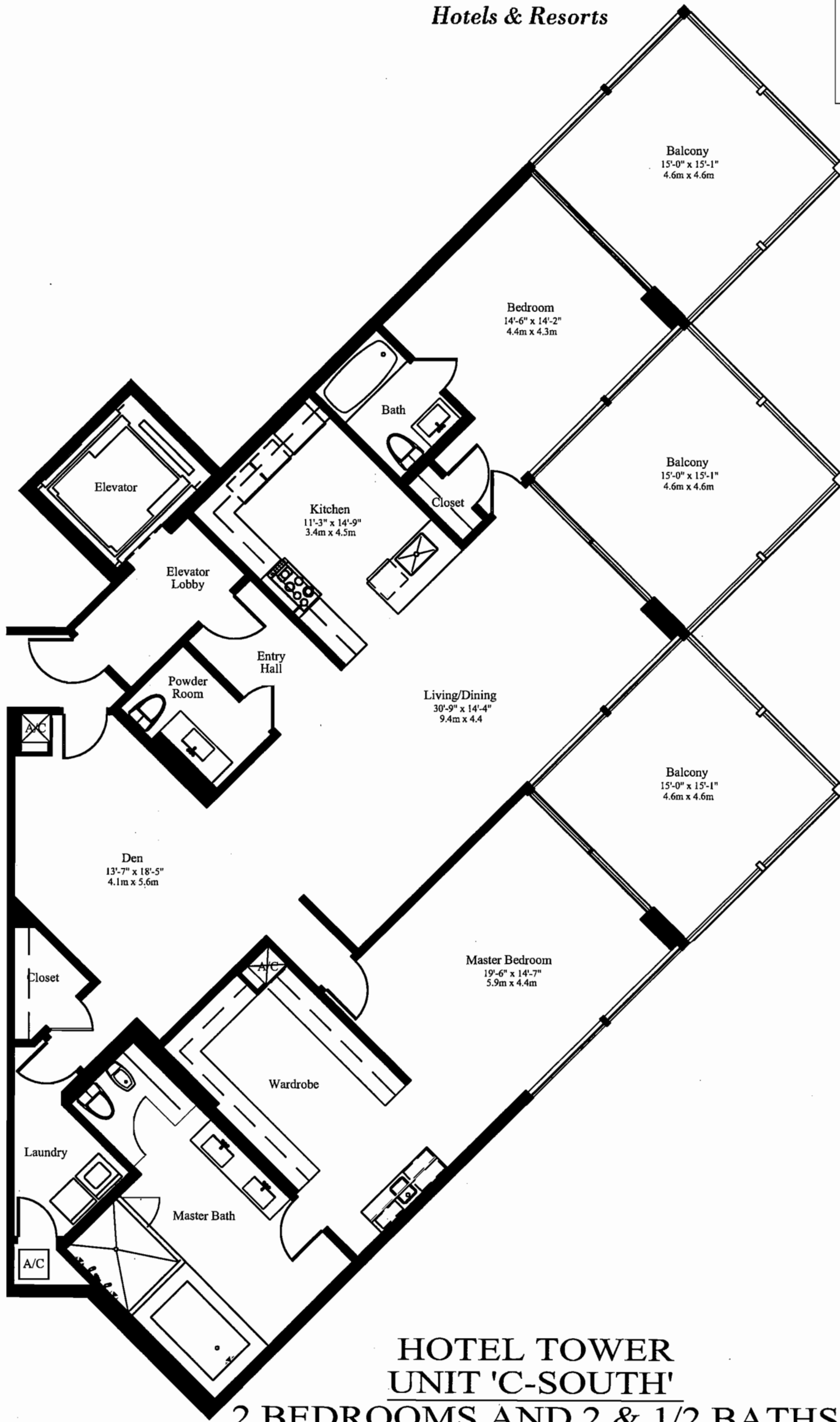
ST. REGIS
Hotels & Resorts

ATLANTIC OCEAN



COLLINS AVENUE

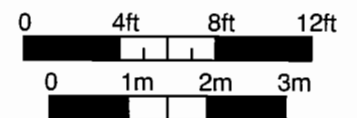
KEY PLAN
N.T.S.



**HOTEL TOWER
UNIT 'C-SOUTH'**

2 BEDROOMS AND 2 & 1/2 BATHS

A/C	2,413 SQ FT	224.2 M ²
BALCONY	683 SQ FT	63.5 M ²
TOTAL	3,096 SQ FT	287.7 M²



The Sieger Suarez Architectural Partnership

5996 Southwest 70th Street, South Miami, Florida, 33143. 305/274-2702.

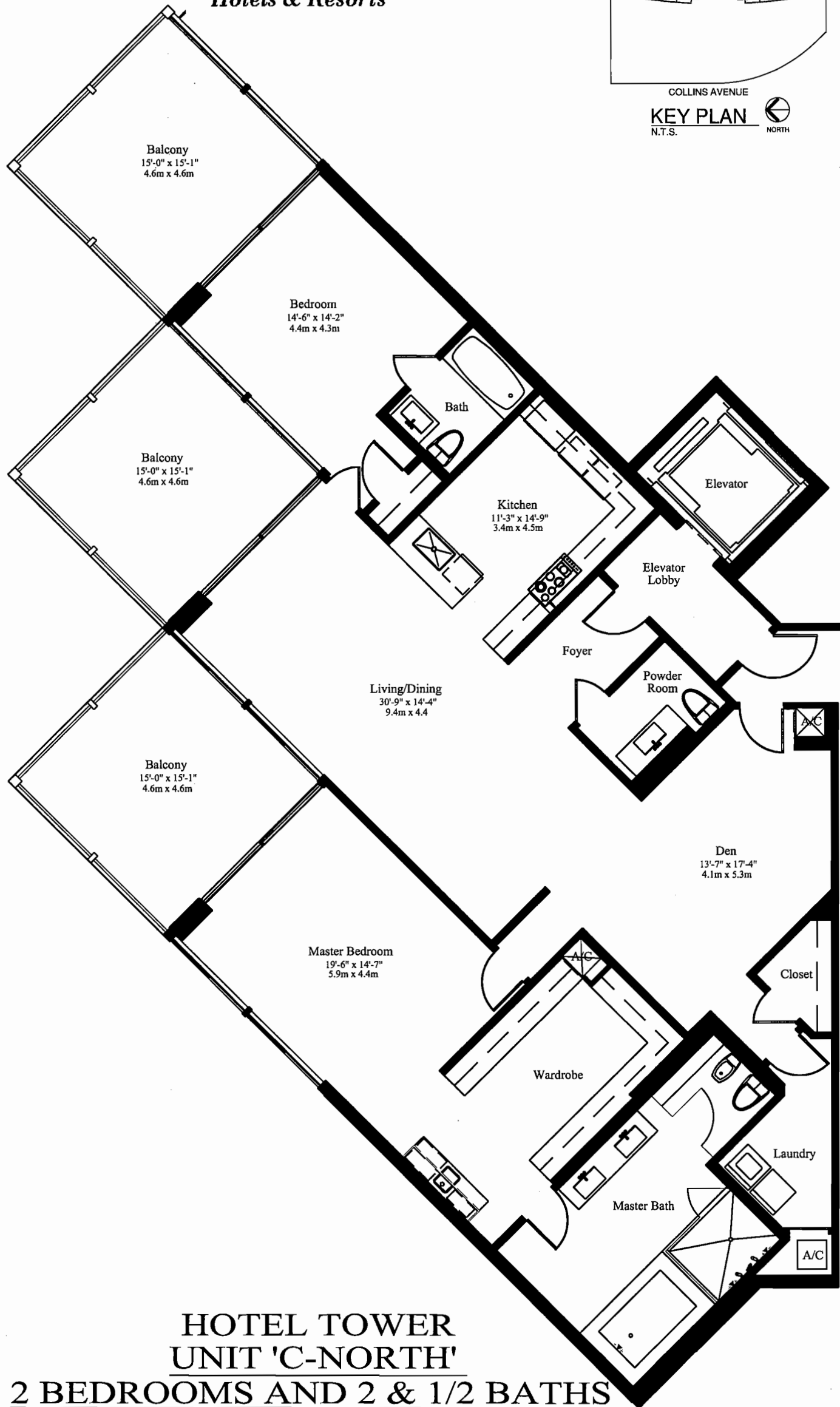
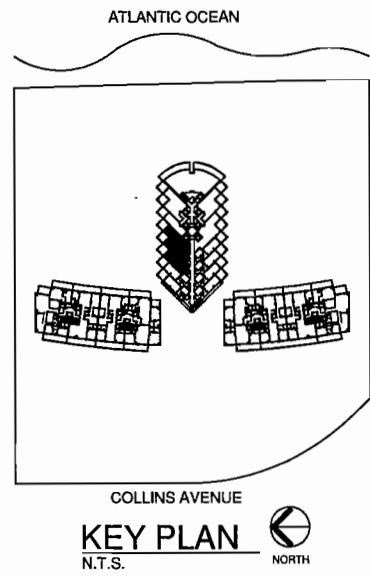
Charles M. Sieger, F.A.I.A.
Lic. # AB5782

Jose J. Suarez, A.I.A.
Lic. # AB1005

Stated dimensions are measured to the exterior boundaries of the exterior walls, the centerline of interior demising walls between units, and the outer boundary of interior demising walls adjacent to common elements, and in fact vary from the dimensions that would be determined by using the description and definition of the "Unit" set forth in the Declaration (which generally only includes the interior airspace between the perimeter walls and excludes interior structural components). All dimensions are approximate, and all floor plans and development plans are subject to change.

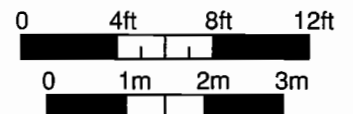


ST. REGIS
Hotels & Resorts



**HOTEL TOWER
UNIT 'C-NORTH'
2 BEDROOMS AND 2 & 1/2 BATHS**

A/C	2,413 SQ FT	224.2 M ²
BALCONY	683 SQ FT	63.5 M ²
TOTAL	3,096 SQ FT	287.7 M²



The Sieger Suarez Architectural Partnership

5996 Southwest 70th Street, South Miami, Florida, 33143. 305/274-2702.

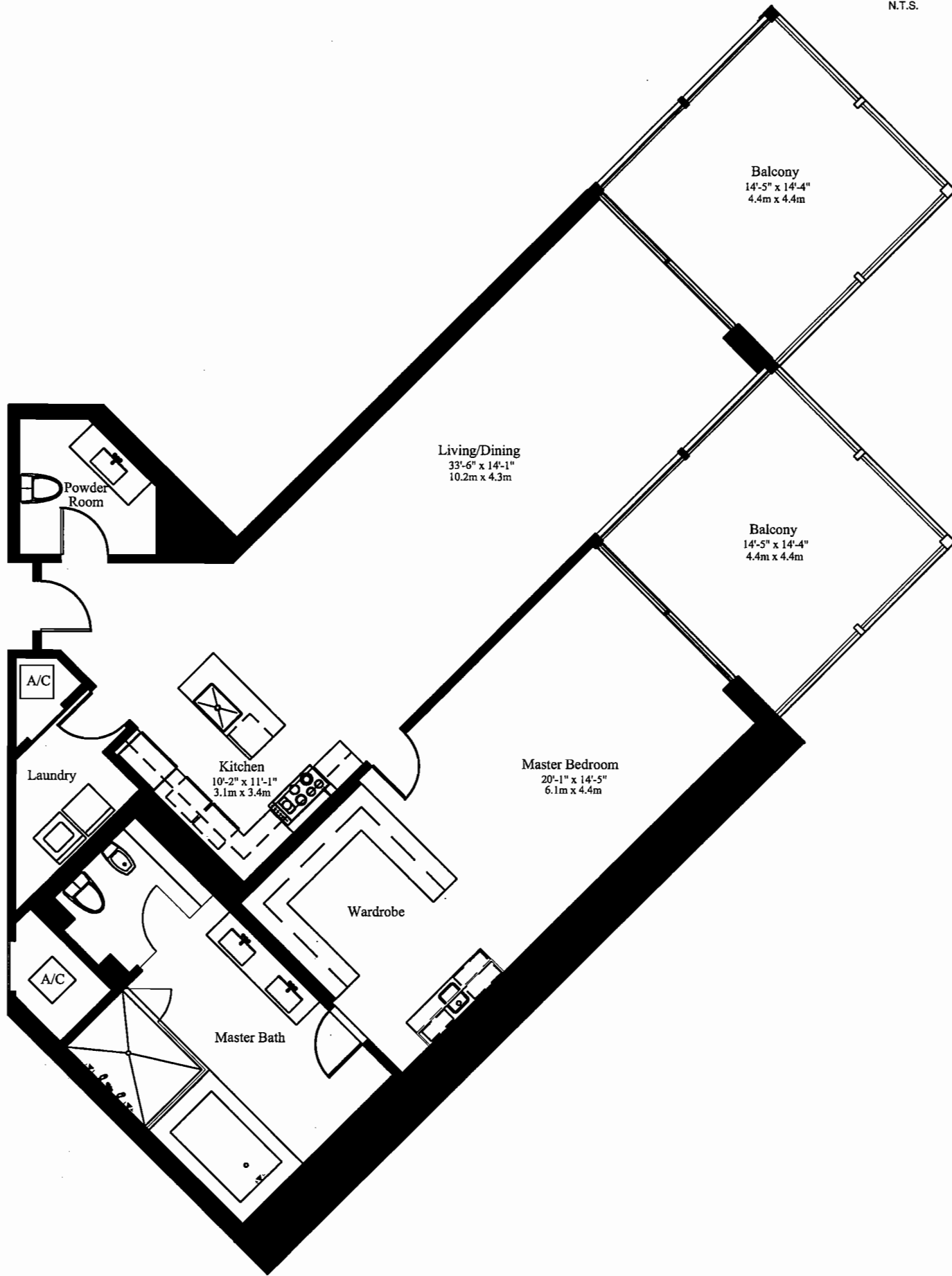
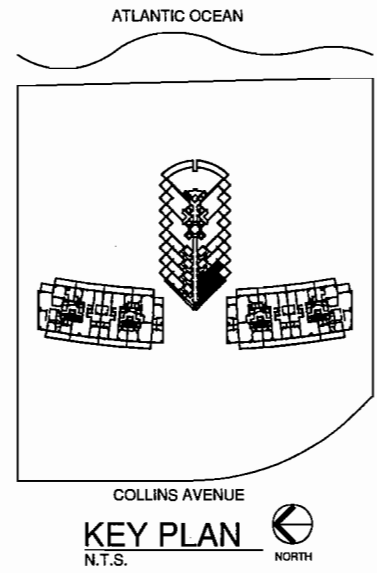
Charles M. Sieger, F.A.A.
Lic. # AH5782

Jose A. Suarez, A.A.
Lic. # AR11005

Stated dimensions are measured to the exterior boundaries of the exterior walls, the centerline of interior demising walls between units, and the outer boundary of interior demising walls adjacent to common elements, and in fact vary from the dimensions that would be determined by using the description and definition of the "Unit" set forth in the Declaration (which generally only includes the interior airspace between the perimeter walls and excludes interior structural components). All dimensions are approximate, and all floor plans and development plans are subject to change.

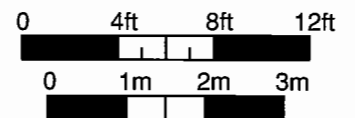


ST. REGIS
Hotels & Resorts



**HOTEL TOWER
UNIT 'D-SOUTH'
1 BEDROOMS AND 2 & 1/2 BATHS**

A/C	1,817 SQ FT	168.8 M ²
BALCONY	455 SQ FT	42.3 M ²
TOTAL	2,272 SQ FT	211.1 M²



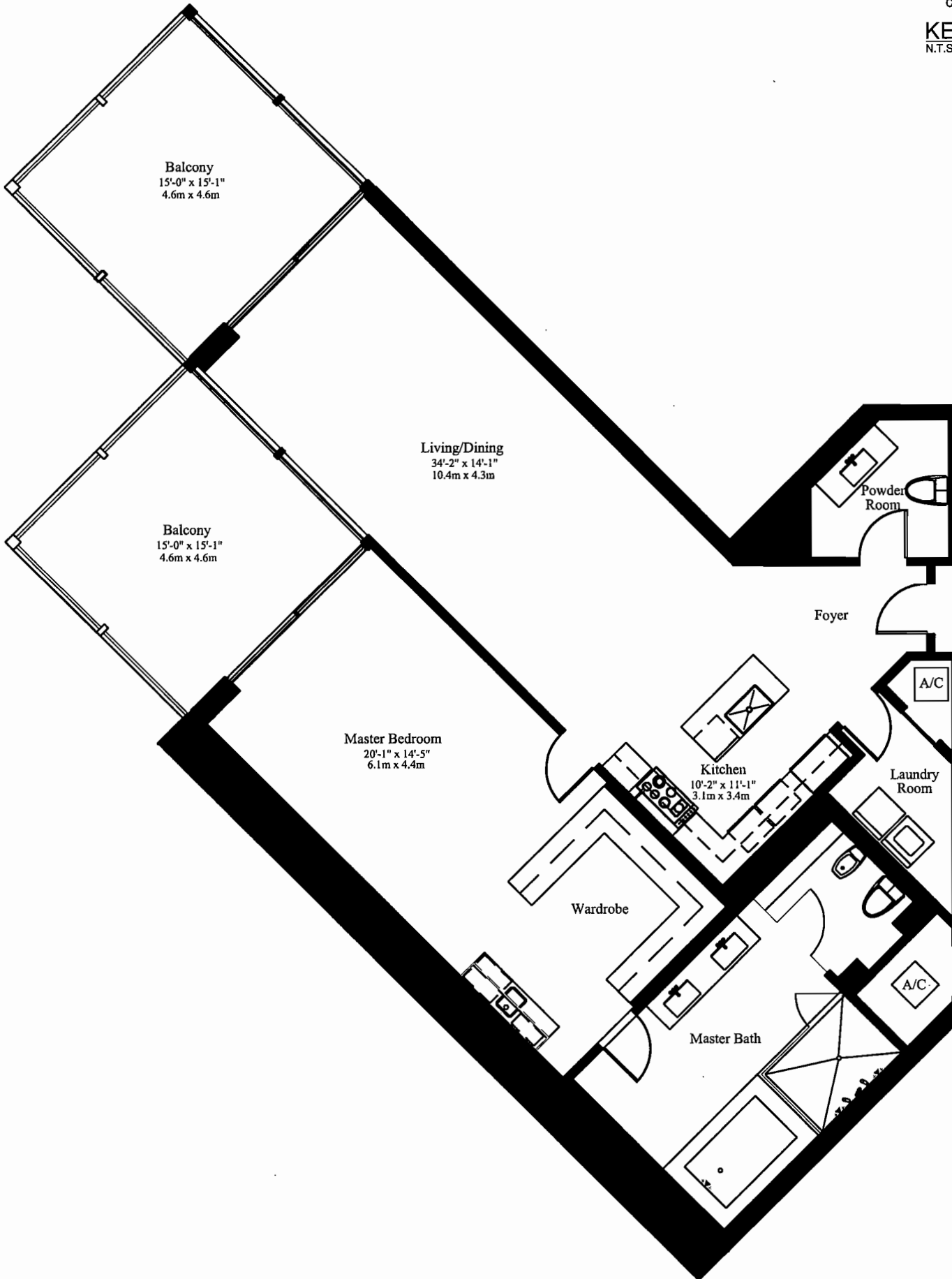
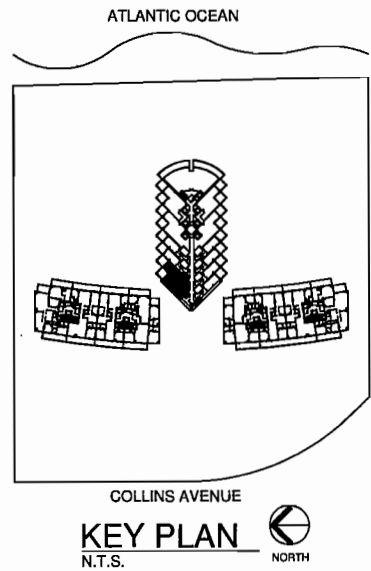
The Sieger Suarez Architectural Partnership

5996 Southwest 70th Street, South Miami, Florida, 33143, 305/274-2702.
Charles H. Sieger, AIA
 Daniel J. Suarez, AIA

Stated dimensions are measured to the exterior boundaries of the exterior walls, the centerline of interior demising walls between units, and the outer boundary of interior demising walls adjacent to common elements, and in fact vary from the dimensions that would be determined by using the description and definition of the "Unit" set forth in the Declaration (which generally only includes the interior airspace between the perimeter walls and excludes interior structural components). All dimensions are approximate, and all floor plans and development plans are subject to change.

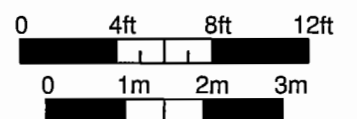


ST. REGIS
Hotels & Resorts



**HOTEL TOWER
UNIT 'D-NORTH'
1 BEDROOM AND 2 & 1/2 BATHS**

A/C	1,817 SQ FT	168.8 M ²
BALCONY	455 SQ FT	42.3 M ²
TOTAL	2,272 SQ FT	211.1 M²



The Sieger Suarez Architectural Partnership

3996 Southwest 70th Street, South Miami, Florida, 33143, 305/274-2702.

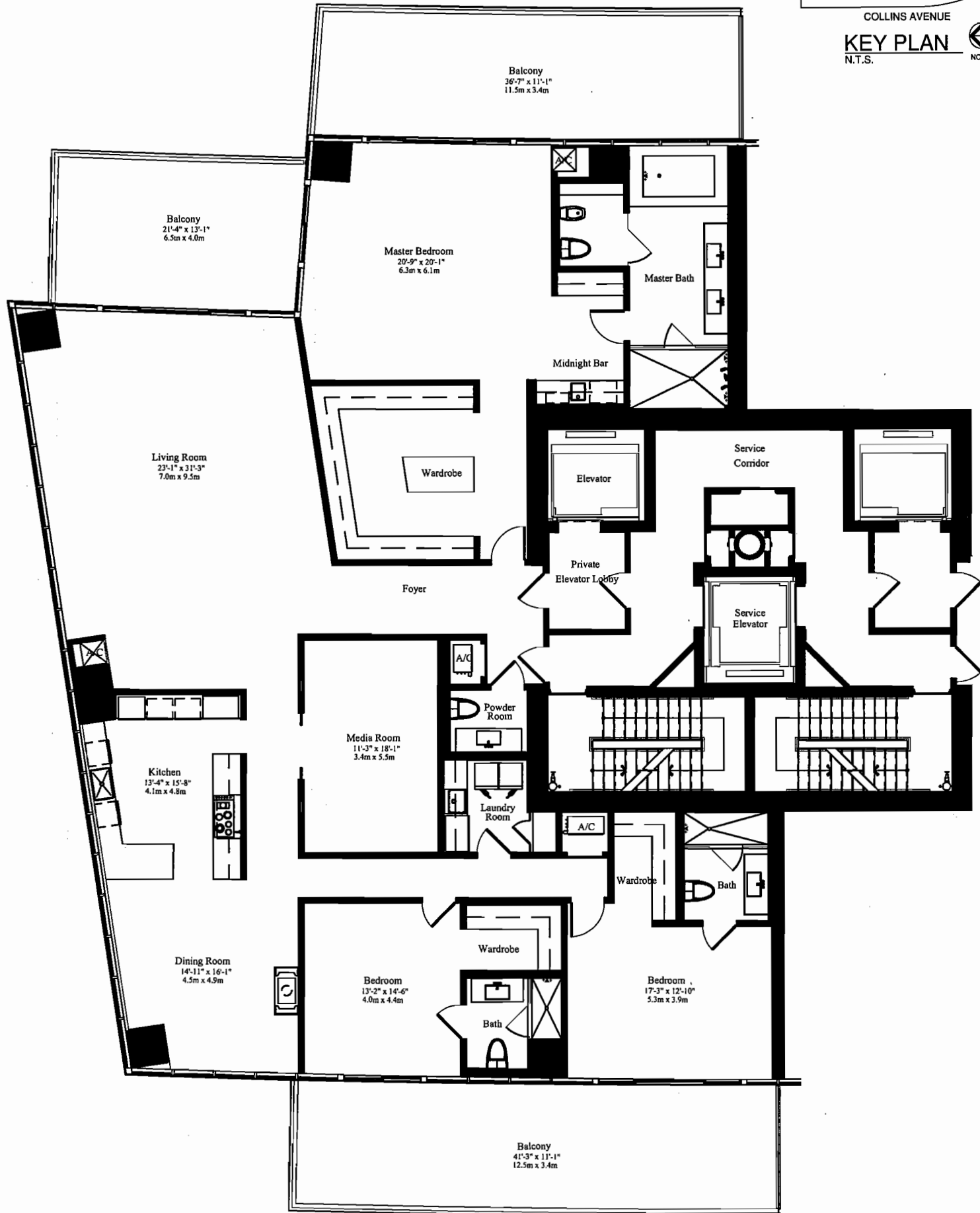
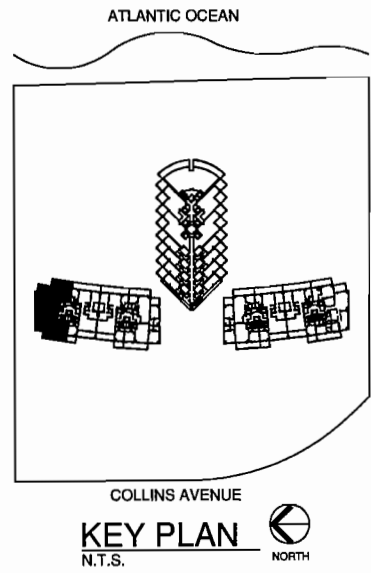
Charles B. Sieger, F.A.I.A.
L.L.P. / AIA/ASA

Jose A. Suarez, A.I.A.
L.L.P. / AIA/ASA

Stated dimensions are measured to the exterior boundaries of the exterior walls, the centerline of interior demising walls between units, and the outer boundary of interior demising walls adjacent to common elements, and in fact vary from the dimensions that would be determined by using the description and definition of the "Unit" set forth in the Declaration (which generally only includes the interior airspace between the perimeter walls and excludes interior structural components). All dimensions are approximate, and all floor plans and development plans are subject to change.

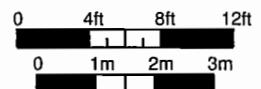


ST. REGIS
Hotels & Resorts



**NORTH TOWER
UNIT 'A'**
3 BEDROOMS, MEDIA ROOM AND 3 1/2 BATHS

A/C	3,884 SQ FT	360.8 M ²
BALCONY	1,132 SQ FT	105.2 M ²
TOTAL	5,016 SQ FT	466.0 M²



The Sieger Suarez Architectural Partnership

5996 Southwest 70th Street, South Miami, Florida, 33143, 305/274-2702.

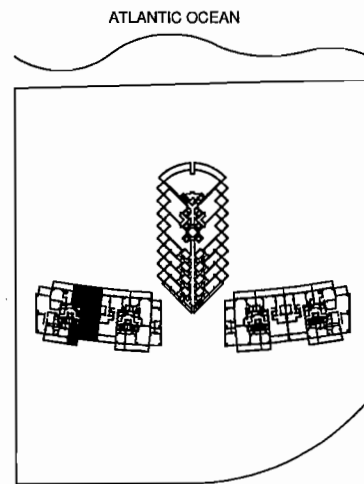
Charles H. Sieger, F.A.I.A.
12/7/2012

Jim A. Suarez, A.A.A.
12/7/2012

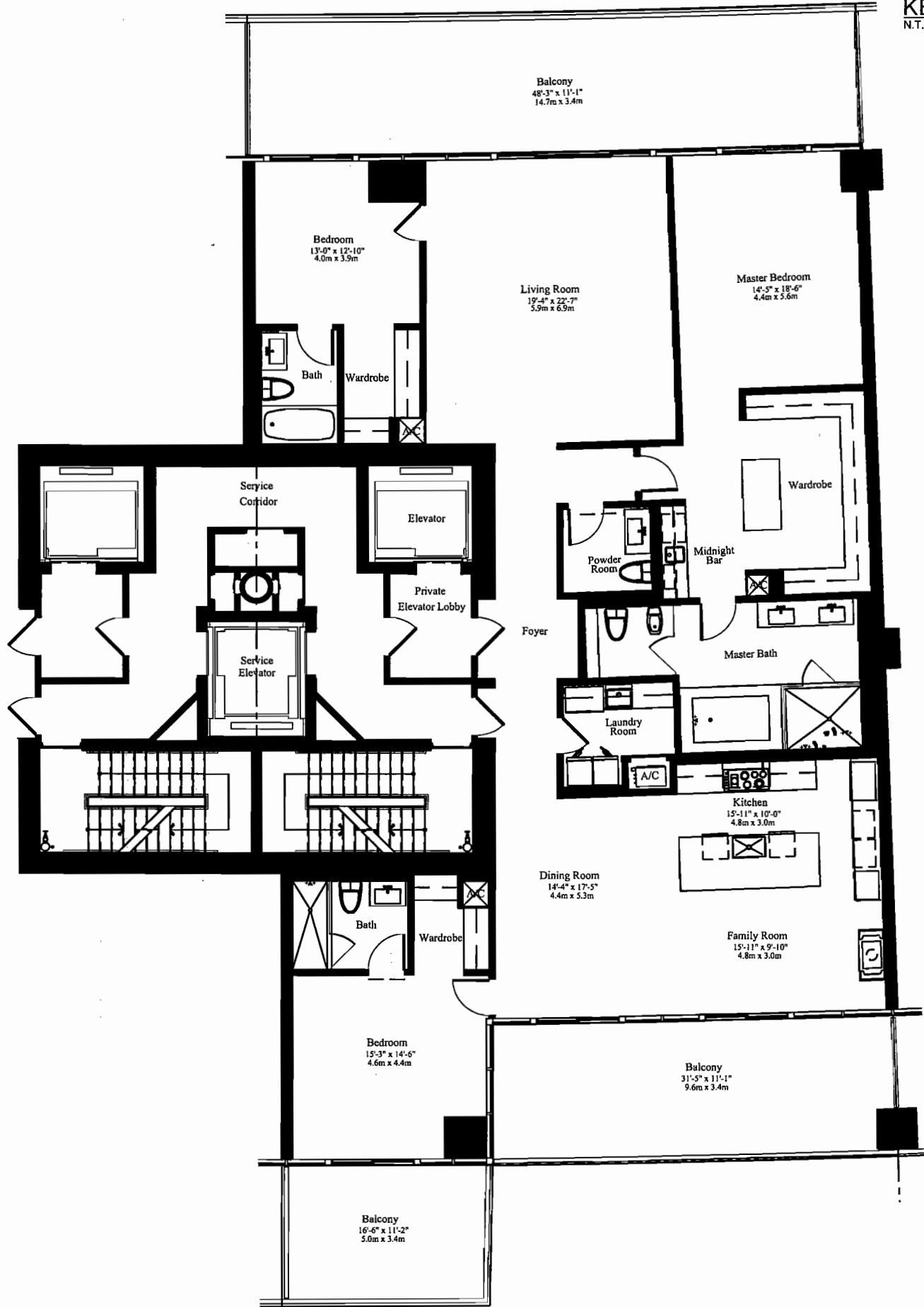
Stated dimensions are measured to the exterior boundaries of the exterior walls, the centerline of interior demising walls between units, and the outer boundary of interior demising walls adjacent to common elements, and in fact vary from the dimensions that would be determined by using the description and definition of the "Unit" set forth in the Declaration (which generally only includes the interior airspace between the perimeter walls and excludes interior structural components). All dimensions are approximate, and all floor plans and development plans are subject to change.



ST. REGIS
Hotels & Resorts

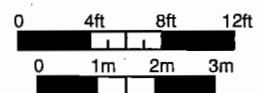


KEY PLAN
N.T.S. NORTH



NORTH TOWER (Levels 04-11)
UNIT 'B' MOD
3 BEDROOMS AND 3 1/2 BATHS

A/C	3,070 SQ FT	285.2 M ²
BALCONY	1,071 SQ FT	99.5 M ²
TOTAL	4,141 SQ FT	384.7 M²



The Sieger Suarez Architectural Partnership

5996 Southwest 70th Street, South Miami, Florida, 33143, 305/274-2702.

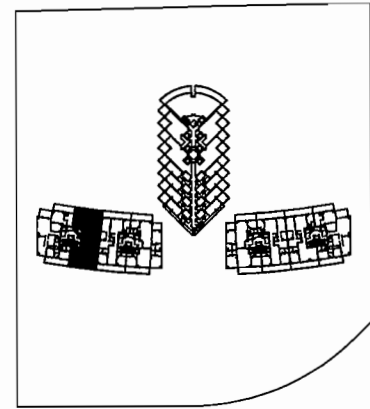
Charles H. Sieger, F.A.I.A. Peter A. Suarez, A.I.A.

Stated dimensions are measured to the exterior boundaries of the exterior walls, the centerline of interior demising walls between units, and the outer boundary of interior demising walls adjacent to common elements, and in fact vary from the dimensions that would be determined by using the description and definition of the "Unit" set forth in the Declaration (which generally only includes the interior airspace between the perimeter walls and excludes interior structural components). All dimensions are approximate, and all floor plans and development plans are subject to change.

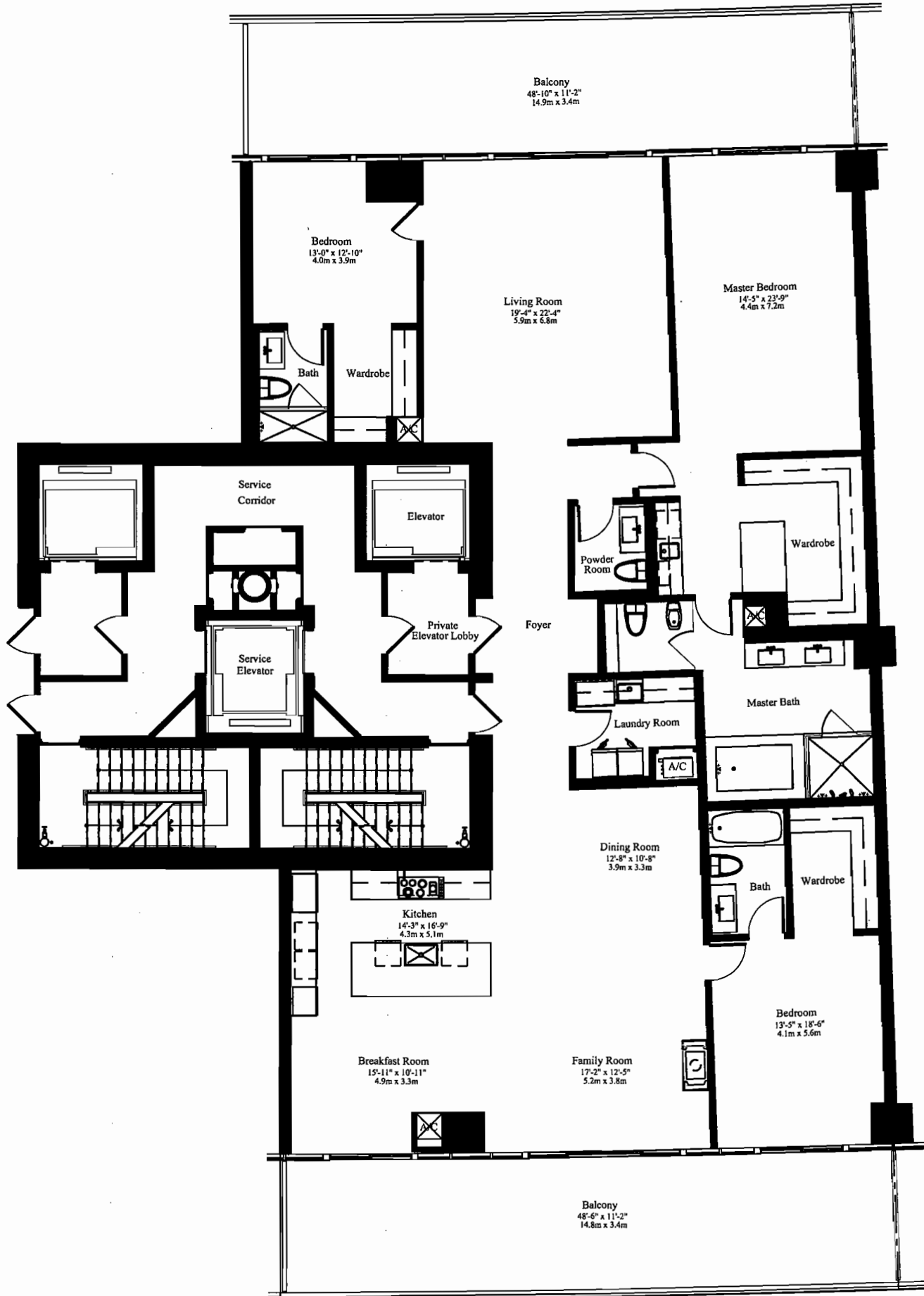


ST. REGIS
Hotels & Resorts

ATLANTIC OCEAN

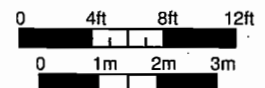


COLLINS AVENUE
KEY PLAN
N.T.S. NORTH



**NORTH TOWER (Levels 12-26)
UNIT 'B'
3 BEDROOMS AND 3 1/2 BATHS**

A/C	3,459 SQ FT	321.4 M ²
BALCONY	1,071 SQ FT	99.5 M ²
TOTAL	4,530 SQ FT	420.9 M²



The Sieger Suarez Architectural Partnership

5996 Southwest 70th Street, South Miami, Florida, 33143. 305/274-2702.

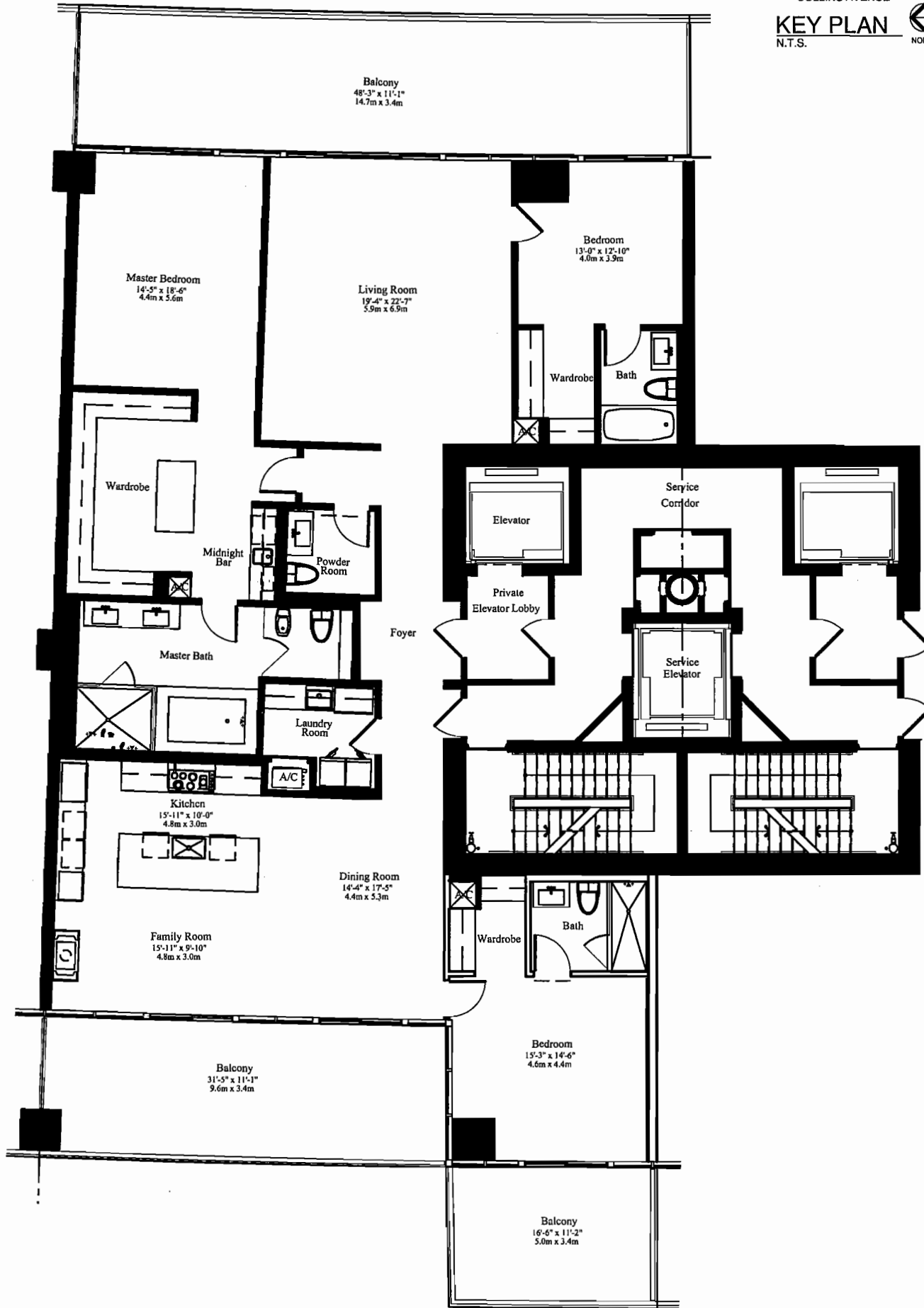
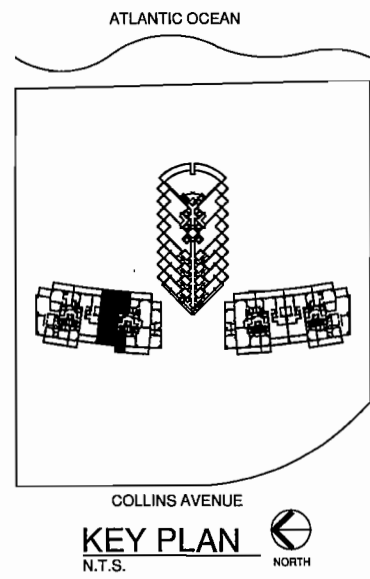
Charles H. Sieger, F.A.I.A.
Lic. # 16502

Jose J. Suarez, A.I.A.
Lic. # 20108

Stated dimensions are measured to the exterior boundaries of the exterior walls, the centerline of interior demising walls between units, and the outer boundary of interior demising walls adjacent to common elements, and in fact vary from the dimensions that would be determined by using the description and definition of the "Unit" set forth in the Declaration (which generally only includes the interior airspace between the perimeter walls and excludes interior structural components). All dimensions are approximate, and all floor plans and development plans are subject to change.

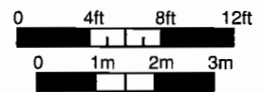


ST. REGIS
Hotels & Resorts



**NORTH TOWER (Levels 04-11)
UNIT 'C' MOD
3 BEDROOMS AND 3 1/2 BATHS**

A/C	3,070 SQ FT	285.2 M ²
BALCONY	1,071 SQ FT	99.5 M ²
TOTAL	4,141 SQ FT	384.7 M²



The Sieger Suarez Architectural Partnership

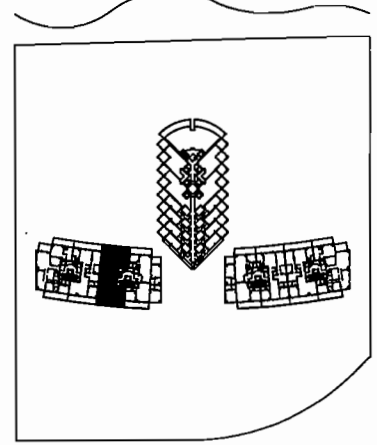
5996 Southwest 70th Street, South Miami, Florida, 33143. 305/274-2702.
Charles H. Sieger, F.A.I.A. James J. Suarez, A.I.A.

Stated dimensions are measured to the exterior boundaries of the exterior walls, the centerline of interior demising walls between units, and the outer boundary of interior demising walls adjacent to common elements, and in fact vary from the dimensions that would be determined by using the description and definition of the "Unit" set forth in the Declaration (which generally only includes the interior airspace between the perimeter walls and excludes interior structural components). All dimensions are approximate, and all floor plans and development plans are subject to change.

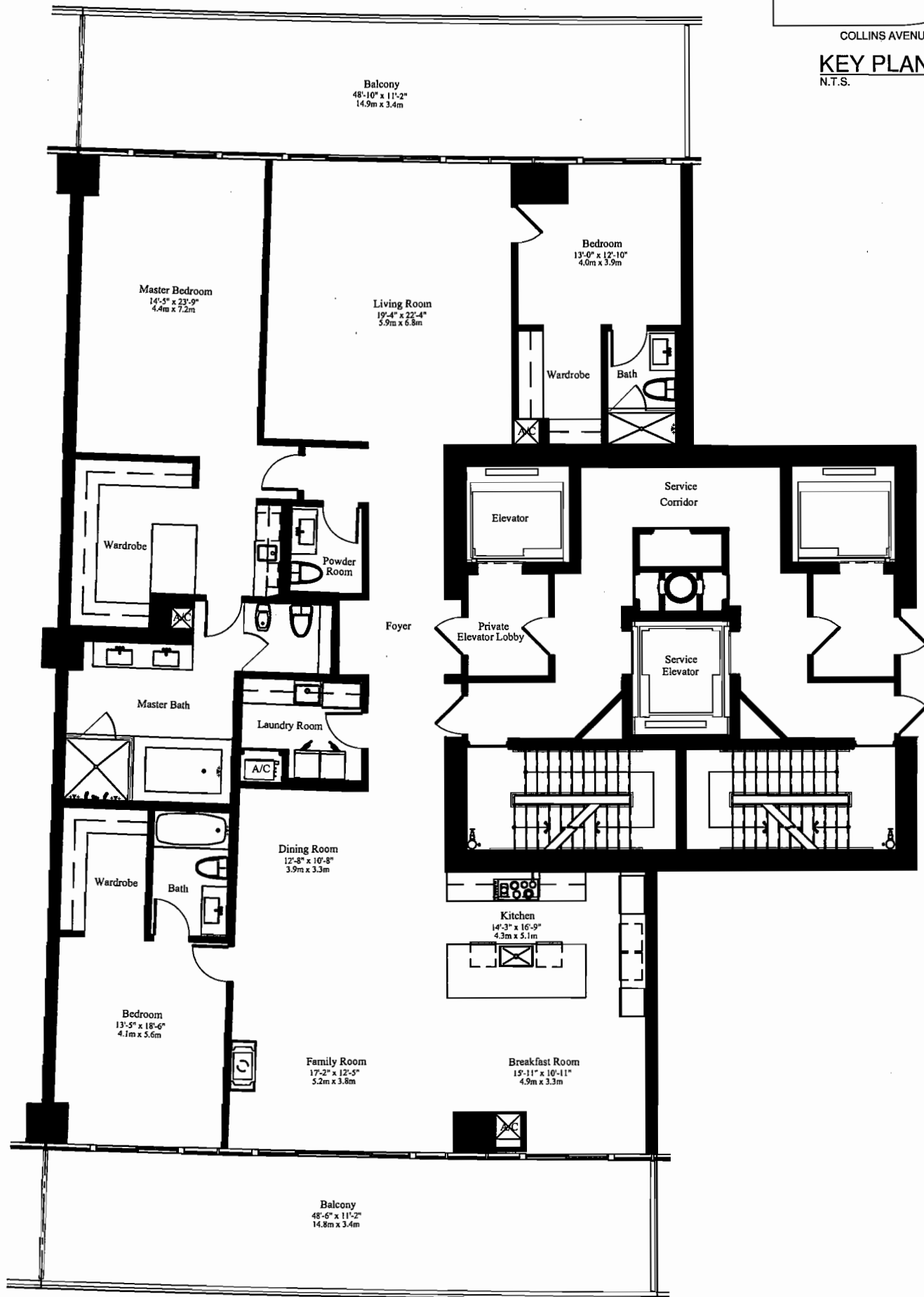


ST. REGIS
Hotels & Resorts

ATLANTIC OCEAN

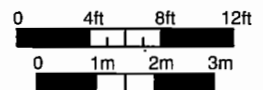


COLLINS AVENUE
KEY PLAN
N.T.S. NORTH



NORTH TOWER (Levels 12-26)
UNIT 'C'
3 BEDROOMS AND 3 1/2 BATHS

A/C	3,459 SQ FT	321.4 M ²
BALCONY	1,071 SQ FT	99.5 M ²
TOTAL	4,530 SQ FT	420.9 M²



The Sieger Suarez Architectural Partnership

5996 Southwest 70th Street, South Miami, Florida, 33143, 305/274-2702.

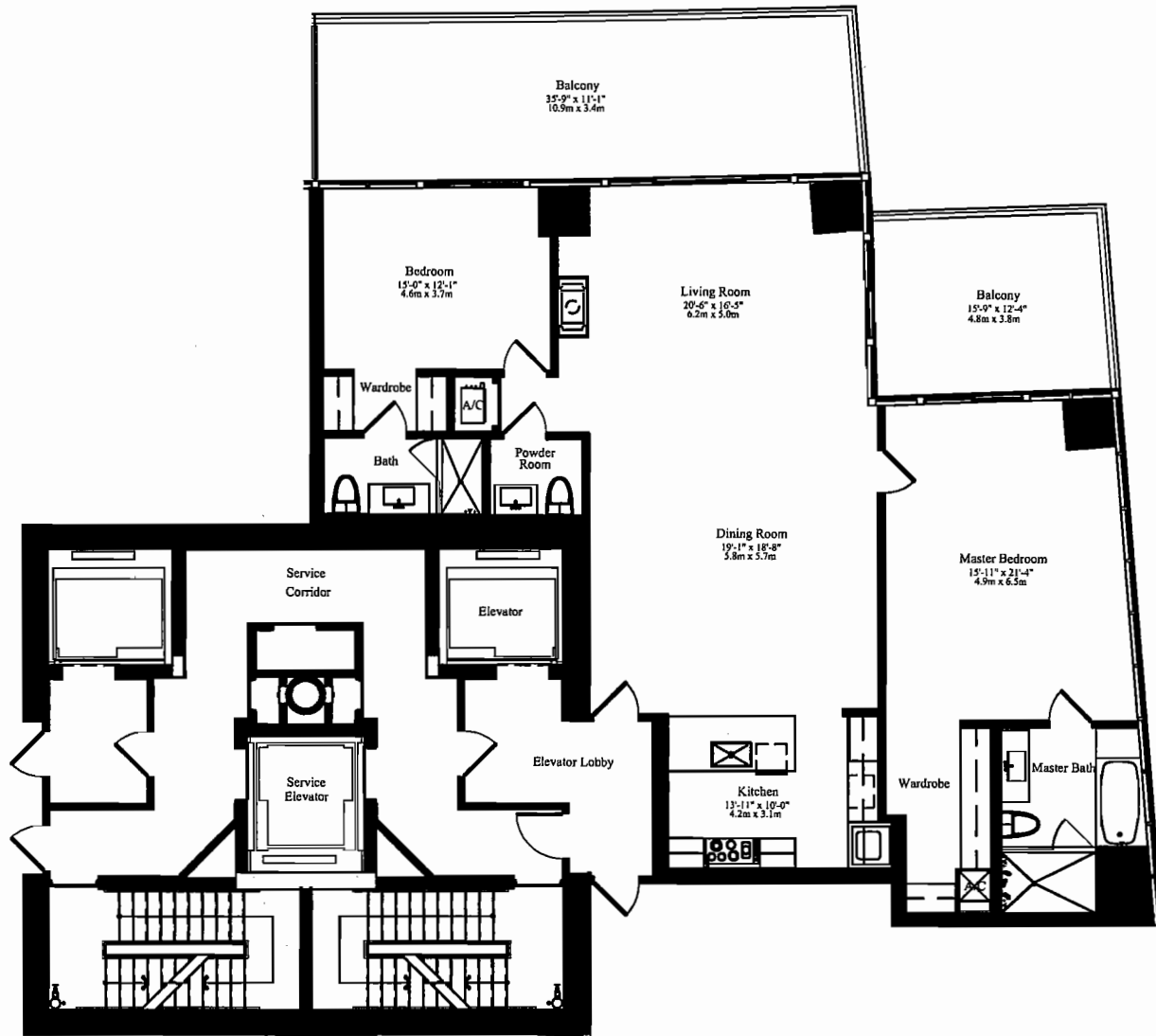
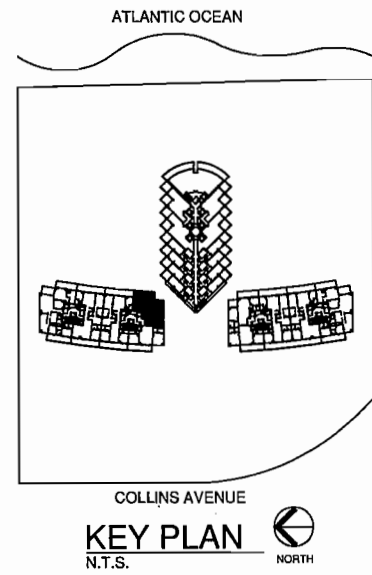
Charles H. Sieger, F.A.I.A.
Lic. # 16516

Jose A. Suarez, A.I.A.
Lic. # 20170

Stated dimensions are measured to the exterior boundaries of the exterior walls, the centerline of interior demising walls between units, and the outer boundary of interior demising walls adjacent to common elements, and in fact vary from the dimensions that would be determined by using the description and definition of the "Unit" set forth in the Declaration (which generally only includes the interior airspace between the perimeter walls and excludes interior structural components). All dimensions are approximate, and all floor plans and development plans are subject to change.

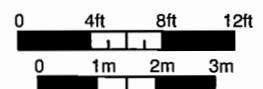


ST. REGIS
Hotels & Resorts



**NORTH TOWER
UNIT 'D'
2 BEDROOMS AND 2 1/2 BATHS**

A/C	1,911 SQ FT	177.5 M ²
BALCONY	594 SQ FT	55.2 M ²
TOTAL	2,505 SQ FT	232.7 M²



The Sieger Suarez Architectural Partnership

5996 Southwest 70th Street, South Miami, Florida, 33143, 305/274-2702.

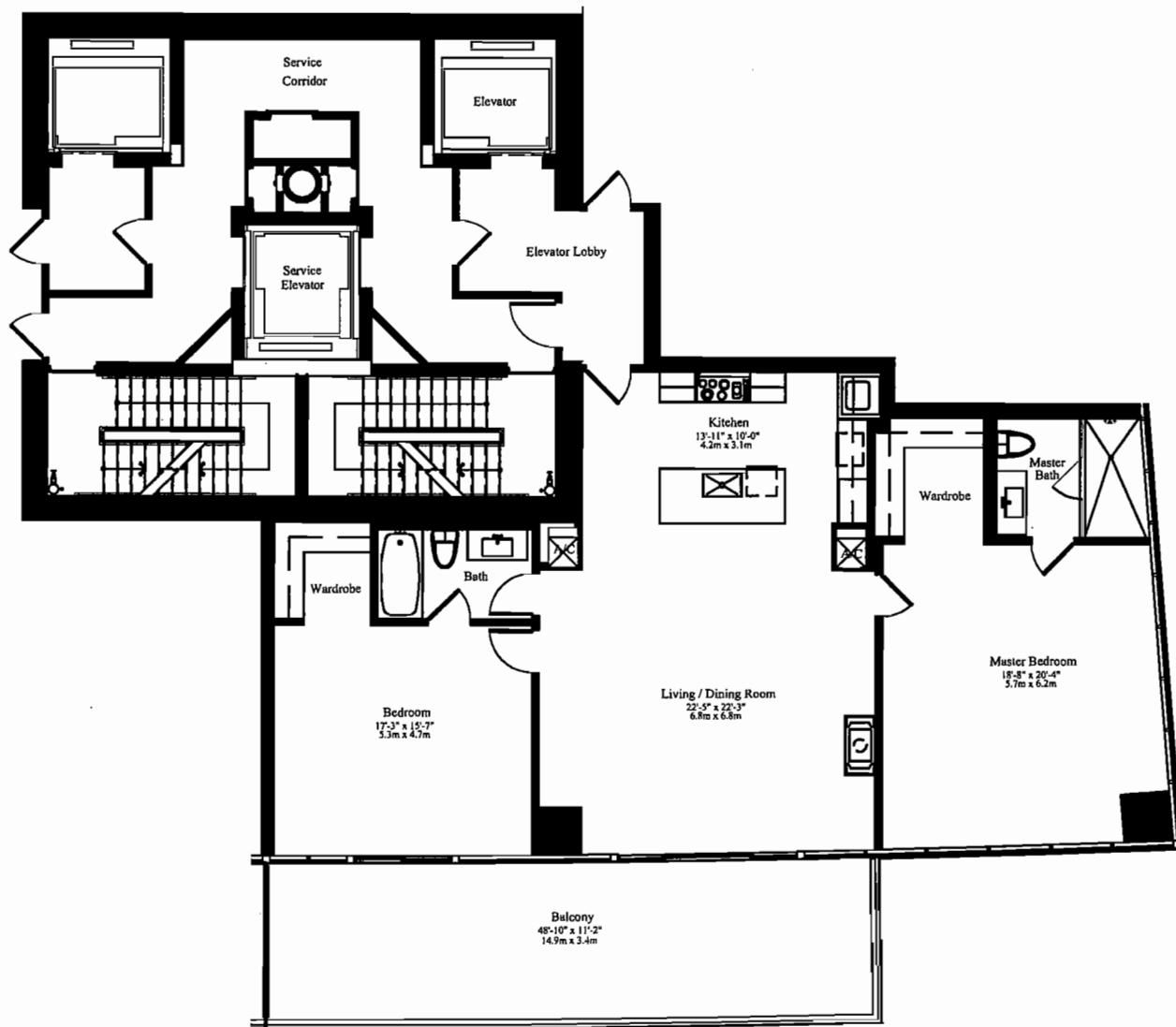
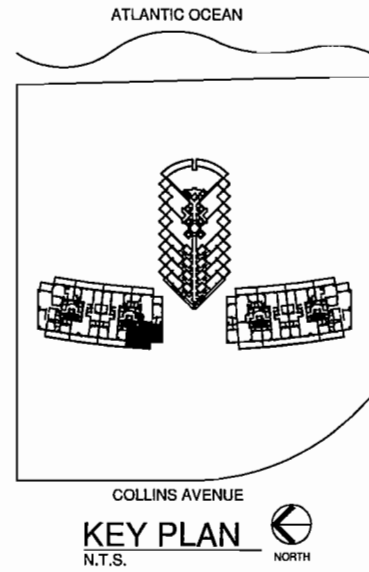
Charles H. Sieger, F.A.I.A.
C.H. Sieger, AIA

Jose A. Suarez, AIA
J.A. Suarez, AIA

Stated dimensions are measured to the exterior boundaries of the exterior walls, the centerline of interior demising walls between units, and the outer boundary of interior demising walls adjacent to common elements, and in fact vary from the dimensions that would be determined by using the description and definition of the "Unit" set forth in the Declaration (which generally only includes the interior airspace between the perimeter walls and excludes interior structural components). All dimensions are approximate, and all floor plans and development plans are subject to change.

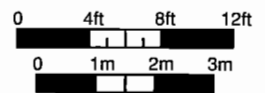


ST. REGIS
Hotels & Resorts



**NORTH TOWER
UNIT 'E'
2 BEDROOMS AND 2 BATHS**

A/C	1,777 SQ FT	165.1 M ²
BALCONY	455 SQ FT	42.3 M ²
TOTAL	2,232 SQ FT	207.4 M²



The Sieger Suarez Architectural Partnership

5996 Southwest 70th Street, South Miami, Florida, 33143, 305/274-2702.
Doris H. Sieger, F.A.I.A. Jose J. Suarez, A.I.A.

Stated dimensions are measured to the exterior boundaries of the exterior walls, the centerline of interior demising walls between units, and the outer boundary of interior demising walls adjacent to common elements, and in fact vary from the dimensions that would be determined by using the description and definition of the "Unit" set forth in the Declaration (which generally only includes the interior airspace between the perimeter walls and excludes interior structural components). All dimensions are approximate, and all floor plans and development plans are subject to change.